

CASTLE NEWS

Serving the community leagues of
Baturyn, Caernarvon, Carlisle, Cumberland/Oxford,
Dunluce, Lorelei/Beaumaris

November 2020



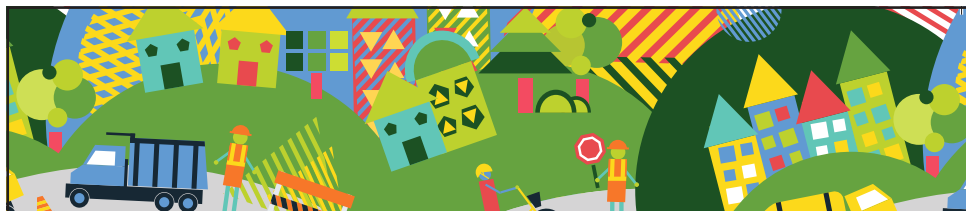
Published by Calder Publications. To advertise please call 780-918-0336 or email info@communityleagueneews.com

Purdy's Chocolate Fundraiser benefiting Baturyn Playschool

Baturyn Community Playschool is fundraising with Purdy's Chocolatier, just in time for the Holidays. If you'd like to support them and purchase some very sweet Holiday gifts for friends, family and yourself, you can find complete information online at <https://fundraising.purdys.com/1188100-76670>

The group number when ordering is 54371.

Alternatively, you may contact Laura at pswaysandmeans@baturyn.ca. Final orders are due November 25, 2020 and pick up will be December 13, 2020. Thank you so much!



Help us make your neighbourhood better

**NOV
2020**

Building a Project Vision & Exploring Opportunities
November 5 – 26, 2020
edmonton.ca/BuildingBaturyn

REFINE

Starting in 2023, Baturyn will see the replacement of its aging roadway and alley surfaces, street lights and sidewalks as part of the City of Edmonton's Building Great Neighbourhoods program for mature neighbourhoods. **Planning for this renewal has just begun.**

During the month of November, we invite you to visit edmonton.ca/BuildingBaturyn to learn more about public engagement opportunities and to provide your feedback for consideration by the project team. We invite you to:

- Assess your neighbourhood as it is today and identify opportunities for enhancement
- Develop a Vision and Guiding Principles for decision-making in Baturyn.

The following are upcoming opportunities starting **November 5:**

1. Take a self-directed tour of your neighbourhood
2. Provide your ideas for Baturyn's Vision and Guiding Principles
3. Share comments and photos about your neighbourhood places
4. Provide your input through an online survey to inform a Vision and Guiding Principles and identify Opportunities for Baturyn Neighbourhood Renewal

To learn more and to sign up for project updates about Baturyn Neighbourhood Renewal visit:

edmonton.ca/BuildingBaturyn
or call **311**

**SHARE YOUR VOICE
SHAPE OUR CITY**

Edmonton

Thank you for engaging virtually as we adjust our engagement practices as a result of COVID-19.

Cumberland/Oxford Halloween Yard contest



Thank you to everyone who decorated their lawns and participated in our Halloween Yard contest. We loved seeing all the Halloween spirit in a time when covid prevented us from running the Haunted Forest.

Dunluce Preschool Fall 2020

We, the Dunluce Preschool Executive Team, have decided that we will not be offering preschool in September.

Considering the amount of time, energy and commitment to ensure our teachers and little preschoolers are in a safe environment, we feel is not in the best interest of everyone involved, including the parent helpers, at this time.

We will be watching and listening to what may or may not occur in the fall and evaluate a potential start in January.

Thank you for your patience as we navigate our new environment. If you have any questions, please don't hesitate in contacting us directly.

Sincerely,
Dunluce Preschool Executive Team

2020 Castledowns Variety Show



CASTLEDOWNS VARIETY SHOW
"An Evening of Adult Comedy"

www.castledowns.ca

Box 31075 Namao Center, Edmonton AB T5Z 3P3

Phone (780) 406-9070

To our wonderful patrons and volunteers:
It is with regret that we inform you that the CDRS board has decided not to put on a show this year. The Variety Show would fall under Phase 3 of the provinces relaunch strategy. As there really is no timeline for when that might take place, and social distancing measures will still be required when it does, it would greatly impede our ability to put together the best show possible for our patrons and volunteers.
Plus, we want to do our part to keep every-

one safe. It wasn't an easy decision but one that needed to be made. We appreciate your understanding and look forward to coming back for our 36th year in 2021!

Thanks again for your continued support and know that the fall just won't be the same without you!

Stay Safe
Lynnette - President
Castle Downs Recreation Society
Nadine - Chairperson
Castle Downs Variety Show

Baturyn Community League News



Community League Board Contacts

Positions are filled on a voluntary basis.

If you are interested in board positions or would like to get involved, please contact the Board President at president@baturyn.ca to inquire about vacancies and opportunities.

Position	Name	Email
President	Tricia Stettner	president@baturyn.ca
Vice President	Vacant	vicepresident@baturyn.ca
Treasurer	Paul Petersen	treasurer@baturyn.ca
Secretary	Laura Bots	secretary@baturyn.ca
Castle Downs Rec. Society Rep.	Justin Dale	CDRS_1@baturyn.ca
Castle Downs Rec. Society Rep.	Kim Yellowknee	CDRS_2@baturyn.ca
Communications Director	Todd Lefevbre	communications@baturyn.ca
Communications Assistants	Angela Ferguson, Courtney Barnes	
Facilities Director	Earl Archer	facilities@baturyn.ca
Membership Director	Claudia Gonzalez	membership@baturyn.ca
Playschool Director	Nicole Yankee	playschool@baturyn.ca
Programs Director	Angela Ferguson	programs@baturyn.ca
Soccer Director	Candice Bevan	soccer@baturyn.ca
Social Director	Erin Atwell	social@baturyn.ca
Volunteer Director	Nicole Yankee	volunteers@baturyn.ca

Board Meetings are generally held on the 1st Monday of the Month at 7pm
July & August: No Scheduled Meetings

Baturyn Community League

Proudly supporting the communities of
Baturyn, Elsinore/Chambery (Castlebrook),
Canossa (Castlewood), & Rapperswill (Newcastle)
Website: Baturyn.ca or find us on Facebook

Become a 2020/2021 Member

Get your membership and enjoy the special perks of being a member.

Annual Memberships are valid from September 1st to August 31st.

Membership Fees:

Family \$25.00

Single (16+) \$25.00

Senior (55+) \$10.00

(\$5 service fee applies to purchases made through efcl.org or Servus Credit Union)

Membership Benefits:

- Access to community hosted events
- Free Access to all Community League ice rinks (with skate tags)
- Community League sports programs
- Free access to community swim times at the YMCA (Saturdays: 5:00 pm - 8:45 pm), Grand Trunk Fitness & Leisure Centre (Fridays: 7-9pm, Sundays: 4:15pm-5:45pm & Wednesdays: 8am-10am), O'Leary Fitness & Leisure Centre (Saturdays: 3:45pm - 5:45pm) and Londonderry Fitness & Leisure Centre (Sundays: 4:15pm-5:45pm)
- 20% discount on City of Edmonton Recreation Facilities Adult, Family, Child, and Youth/Senior annual passes or continuous monthly passes. 15% off Multi-Pass purchases. To learn more please call 311 or visit www.edmonton.ca/wellness
- 30% off all Cloverdale Paint products and up to 20% off all sundry items.

Memberships are required to access programs offered by your Baturyn Community League.

Get your membership today by going to
EFCL.org or your local Servus Credit Union.

Your membership fees help support the delivery of various
community programs and events.

Baturyn Community Playschool

Limited registration still available!

We offer a fun, play-based program that builds your child's social and academic skills. Students will be introduced to the joys of learning by participating in field trips, both in and out of school. They will also take part in activities such as pre-reading, science, math, crafts, games, music, kinder-cooking and daily physical activity.

LOCATION: Baturyn Community Hall, 10505 172 Avenue

COST TO REGISTER: \$50 refundable registration fee. Registration is available on a first come, first served basis.



For 3 year olds: Tuesdays and Thursdays
AM Class – FULL
or limited spots remaining in the
PM class – 12:45pm to 3:15pm

For 4 year olds: Mondays, Wednesdays, and Fridays
AM Class – 9:00am to 11:30 am
or
PM class – 12:45pm to 3:15pm

*Child must be 3 years of age at the start of the playschool year for the three year old class. ALL children must be fully toilet trained for any class.

Find us on Facebook  by typing [www.facebook/BaturynCommunityPlayschool](https://www.facebook.com/BaturynCommunityPlayschool)

For more information, please visit our website at
baturynplayschooledmonton.weebly.com or
email our Playschool Director at playschool@baturyn.ca
for more information on how to register.

FIND US ONLINE!

Want to know what's going on in your community?
For community announcements and event information see:



www.baturyn.ca



[www.facebook.com/
BaturynCommunityLeague](https://www.facebook.com/BaturynCommunityLeague)



[Baturyn_Community_League](https://www.instagram.com/Baturyn_Community_League)



#BCLYEG

SNOW REMOVAL

Residential

Please Call Joe

587 334 4578

FAST FRIENDLY SERVICE
REASONABLE RATES

Baturyn Park Rehabilitation

Baturyn Community League has partnered with the Parent Associations at St Charles and Baturyn school to begin a new playground project for Baturyn Park. This first portion, engagement, starts with surveys, community engagement events and getting your feedback. Please complete this survey and share: <https://bit.ly/3mbsdSS>

Bingo

Bingo proceeds from our January 17, 2021 (Sunday) and February 2, 2021 (Tuesday) bingos have been offered to the playground committee if they are able to fill all 14 volunteer positions required. If you are able to help with this fundraising opportunity please contact Nicole at volunteers@baturyn.ca

Baturyn Ice Rinks

Baturyn Community League has found some more awesome volunteers so the rink should be open again this year. Stay tuned as we navigate the new rules so we can open to members. If you are interested in volunteering to help maintain and supervise ice time, please contact president@baturyn.ca

Baturyn’s Neighbourhood Renewal

Baturyn has been chosen for neighbourhood renewal through the City of Edmonton’s Neighbourhood Renewal Program. Planning and design is currently underway with construction anticipated to start in 2023. As part of the renewal process, we want to hear from you. Share your feedback and perspectives on the best ways to communicate and engage with you, your neighbours and the members of your community. A survey is available on Baturyn’s project site and we ask that you take a few minutes to fill it out. Your input will help us to refine a unique Public Engagement and Communications Plan for the renewal of the Baturyn Neighbourhood. Stay tuned for more engagement opportunities and please subscribe to our Baturyn mailing list on the project’s website: edmonton.ca/BuildingBaturyn

Playschool Seeking Used E-readers



Due to Covid restrictions, the Baturyn Community Playschool is looking for gently used Kobo e-readers for their classes this year. If you or someone you know is willing to donate, please contact playschool@baturyn.ca

Skip the Depot

Support Baturyn Community League with Skip the Depot app. They will pick up cans, electronics and more. You can even schedule pickup so you don’t need to go to the depot! Help keep our neighbourhoods safe! Report all suspicious activity to EPS. Write down any many identifying details as possible – such as car make & license plate, what a person is wearing – to include in your report.



Dr. Tarek Tarchichi
www.castledownsdentalcentre.com
780-456-2990
11816-145 Ave

***New Patients Welcome.
Emergency & Walkins.
Apointments Available
Gentle Dentistry for
the whole family.***

Dental Centre Hours
Monday to Friday 8 am to 5 pm
Saturdays 9 am to 4 pm
We are closed on Sunday & Public Holidays

At Castledowns Dental Centre, We are more than glad to offer you the following services:

- Root Canal Treatment
- White Fillings
- Wisdom Tooth Extractions
- Partial Dentures
- Dental Implants
- Sedation
- Crown & Bridges
- Veneers
- In office Zoom Teeth Whitening

We Accept:

LEST WE FORGET

REMEMBRANCE DAY

MICHAEL COOPER MP
ST. ALBERT-EDMONTON

20 PERRON STREET, SUITE 220, ST. ALBERT, ALBERTA T8N 1E4
MP@MICHAELCOOPERMP.CA • MICHAELCOOPERMP.CA • 780-459-0809

Upset in Ward A

Did you know that Ward A will be going without a School Board Trustee until the next municipal election?

We need representation. The Edmonton Public School Board should have called a bi-election for Ward A. This takes away parents’ constitutional right to vote. Start the discussion. Contact the EPSB today.

Ad paid for by Thomas Deak and Friends @DeakMusings



Caernarvon News

Caernarvon Community League Executive
14830 - 118 Street NW, Edmonton AB
Phone or Text (780) 456-3435

President	Jennifer Schell	president@caernarvon.ca
Vice President	Jason Desnoyers	
Treasurer	Teena Burrell	treasurer@caernarvon.ca
Secretary	Kati Hutt	
Bingo	Lynne Hellyer	
Casino	D'Arcy Sommer	casino@caernarvon.ca
CDRS	Danny Burrell	
	Jennifer Schell	
Communications	Rochelle Harasimov	
Equipment	D'Arcy Sommer	
	Giovanni Borrelli	
	Sandy Reda	
Hall Maintenance	Ahmet Kaplan	
Soccer	Jason Desnoyers	soccer@caernarvon.ca
Social	Kati Hutt	social@caernarvon.ca
Programs	Sid Sadik	programs@caernarvon.ca
Signs	Kody Overacker	
Hall Rental Director	Danny Burrell	
Hall Rental Manager	Lynne Hellyer	rentals@caernarvon.ca
Membership	Amanda Meyers	
Neighbourhood Watch	Pamula Abramic Mytz	

Facebook



Keep up to date in our community with registrations, events, sports, and so much more! Look up "Caernarvon Community League" and select "Like" and "Follow."



Hall Rentals

If you are looking for a site to host your next big event, give the Caernarvon Community Hall a try! It is wheelchair accessible, and we are one of the only halls in the city that cleans up after your event.

The Hall includes a coat room, raised stage with sound system, full kitchen with brand-new Commercial gas stove and two ovens, wet bar, glass door refrigerators, plenty of kitchen prep space, choice of round and rectangular tables.

Seating Capacity

250 guests for Theatre-style seating

220 guests seated at tables, no dance floor

185 guests seated at tables with a dance floor

Hall Rental Rates

Hourly (Mon-Thurs):

Boardroom \$20, Hall \$35

Daily Sun-Thursday: Hall \$300

Weekend Rates

\$650: Fri-Sun

\$550: Friday and Saturday

\$550: Saturday and Sunday

\$450: Saturday only

\$400: Friday only

Add-Ons

Large BBQ \$50, Popcorn machine \$50,

Dishes Rental \$100 (plates, cutlery, glassware, some small wares)

Damage Deposits

Daily Rental: \$1000, Hourly Rental: \$250

Please contact our Hall Rental Representative Lynne Hellyer at 780-456-3435 (call or text) or rentals@caernarvon.ca if you have questions or would like an appointment to view the facilities.

Having sex?

You need to know:

ALBERTA HAS DECLARED A SYPHILIS OUTBREAK

Last year over 2000 Albertans found out they have Syphilis. Many more may have it and don't even know it.

Symptoms or not: be protected.
Get tested often:
it's free, confidential, easy.

**WHERE? Visit ahs.ca/syphilis
or call 811**

Alberta



Alberta Health
Services

Carlisle Community League News



Carlisle Community Executive List

Position	Filled By	Contact
President	Krista Hennigar	780-951-7627
Vice-President	Heather Magnes	780-903-3583
Treasurer/Grants	Myer Valeriano	780-907-1198
Membership	Jolene Reinhardt	780-819-0236
Secretary	Tara Pohl-Gobeil	780-218-3399
Buildings and Grounds	Jeff Reinhard Rob Jarowka	jrrhino79@gmail.com
Volunteer Co-ordinator	Krista Hennigar	780-951-7627
Casino Chairperson	Krista Hennigar	780-951-7627
Soccer Director	Rob Lewis	carlisesoccerdirector@gmail.com
Program Director	Diane Neiman	780-457-6239
Variety Show Representatives	Sharda Persaud Sharla Sagert	780-340-7313 780-717-3689
CDRS Representatives	Kerri-Lynn Parker Melora Westman	780-554-7037 melora63@live.ca
Social Director	Kara Henebury	780-995-2444
Newsletter/Facebook	Maira Hennigar	780-616-3898



Hall Rental

**Members \$300 and
Non-Members - \$350**

**Rental Inquiries Please
Call 780-457-1090**

Carlisle Membership

Download our FREE APP 'CommuniBee' on your smart device to purchase our membership or contact Jolene Reinhardt - call or text - 780-819-0236 or email jolenereinhardt@gmail.com

Membership benefits include:

- Reduced rates to City of Edmonton Rec. Facilities
- FREE skating at any outdoor Community

League rink.

- University of Alberta (Software Education, large format printing, bookstore)
- Discounts at Acclaimed Heating & Cooling, Cloverdale Paint, House of Wheels, Orbis Sports, Urban Poles, Yardley (snow removal)

Please see efcl.org for more information about discounts available.

Carlisle Programs

YOGA CLASSES

For anyone who wants to stretch and learn basic yoga postures ending with relaxation. Beginners are welcome. Thursdays, 7:00-08:00 pm Prepaid registration is \$40.00 for 10 weeks. There will be no drop-ins at this time. Following COVID-19 safety protocol guidelines.

Yvonne - YAA Certified Instructor

GYMNASTICS

There will be no Gymnastics classes at this time due to COVID19.

For all programs, you will require a yearly membership from a community league within Edmonton or you can purchase a yearly membership from Carlisle Community League at a cost of \$25.00. If you have any suggestions or questions about Programs, please call Diane Neiman, Program Director at 780-457-6239.



Marrazzo Law Office

**10%
OFF
WITH
THIS AD**

- Wills • Notary
- Enduring power of attorney
- Personal directives
- Mobile visits available

**Call today
780-756-5500**

9535 135 Avenue (by Northgate Mall)

Denture Specialist - Over 35 Years Experience

Londonderry Denture Clinic



FREE CONSULTATION

M. Lucyshyn DD

R. Lucyshyn DD

780-476-2529

- New dentures in one day
- Repairs in 30 minutes
- Emergency after hours appointments

**SENIORS
Ask how you
may receive your
dentures
AT NO COST
TO YOU***

*Some conditions and restrictions apply.

www.londonderrydentureclinic.com 13594 Fort Rd. Northeast Edmonton

WEISS-JOHNSON
HEATING, AIR CONDITIONING

House Too Cold?...We Can Fix That!

If it's time to replace your home's furnace Weiss-Johnson has the experience and expertise to ensure it's installed right!



DAIKIN
COMFORT FOR LIFE

**Daikin high efficiency furnaces
carry the industry leading
12 year parts limited warranty.**

**DON'T PAY FOR
12 MONTHS!****

**Receive a complimentary duct
cleaning with the purchase
of a new furnace.**

**Call Weiss-Johnson today!
780-463-3096
weiss-johnson.com**

* Complete warranty details available from your local dealer or at www.daikincomfort.com.
To receive the 12-year Parts Limited Warranty, online registration must be completed within 60 days of installation. Online registration is not required in California or Quebec.

**conditions may apply



Vista

Housing for Seniors

SUBSIDIZED APARTMENTS
FOR LOW INCOME SENIORS

780-476-1470
www.vistahousing.org

14 PROPERTIES IN EDMONTON

Accepting applications for persons 60+
at select locations



FIND
7
DIFFERENCES

Spot the 7 differences and be entered to win a \$10 Kernels Popcorn giftcard!

Send an email with your answer and contact info to contest@communityleagueneews.com to be entered! Winner will be randomly selected November 14th 2020.

EXPERTS IN AIR REPAIR

First Call Heating is your first choice for all your home comfort needs!

We're the people you know and trust,
right in your community.



LENNOX Air is life. Make it perfect.

**Receive Up To
\$1,350 in Rebates PLUS
Don't Pay for 6 Months!**

*On Qualifying Lennox Systems and O.A.C.



firstcallheating.ca | 780.464.3337



Bingo Director's position



Cumberland-Oxford Community League is looking for Volunteer to take Bingo Director's position.

Bingo Director will work with Bingo Assistants to organize volunteers, assign positions, count money and ensure that bingo events run as smoothly as possible. COCL typically runs 12 bingos a year. At each

bingo, either the director or an assistant will need to be at the hall for 4:30 pm, staying until the paperwork is balanced at the end of the event, usually a little after midnight. In addition to counting as a volunteer commitment this position is entitled to COCL bucks as well. Please contact president@cocl.org if interested.

Do you know that you find COCL Community on CommuniBee app?

Join Cumberland Oxford Community League on CommuniBee app for MEMBERSHIP PURCHASE, most up-to-date information, get notification for upcoming events,

important news and much more.

COCL Membership (Individual & Family) for 2020/2021 can be purchased ONLY on CommuniBee app <https://communibee.ca/>

Come join the conversation!

Join our Cumberland-Oxford Community League Group (This is a closed group for residents of neighbourhoods of Cumberland, Oxford, Carlton, Hudson, Skyview, North Oaks

and Albany) where you can post and share information with your neighbours www.facebook.com/groups/coclneighbourhood/

New ice rink

We're putting together the final touches on our new ice rink in Hudson park for this winter. Any other ideas to bring our community together? We'd love to hear from you! Contact the president of COCL at president@cocl.org



**CABBAGE ROLLS
FOR SALE**
20 per Tray \$10.00
60 per Tray \$30.00
FREE DELIVERY
Call Marilyn
780-457-5229

Important information Canada's New Recovery Benefit (CRB) benefits

By Chandan Talukder, CN Tax & Accounting

The Canadian Emergency Response Benefit- (CERB) is gone on September 26, 2020. Government of Canada has started three New Pandemic Relief Benefits for Canadian residents: 1. Canada Recovery Benefit (CRB) 2. Canada Recovery Benefit (CRB) 3. Canada Recovery Sickness Benefit (CRSB). Updated information can be available Canada Revenue Agency website before to apply.

How to apply: Two of the three new benefits are already accessible through the Canada Revenue Agency's My Account portal online or its phone line at 1-833-966-2099.

The Canada Recovery Benefit (CRB) has opened on October 12, 2020 for the first period from September 27, 2020 to October 10, 2020.

The Canada Recovery Benefit (CRB) gives income support to employed and self-employed individuals who are directly affected by COVID-19 and are not entitled to Employment Insurance (EI) benefits.

If you are eligible for the CRB, you can receive \$1,000 (\$900 after taxes withheld) for a 2-week period.

If your situation continues past 2 weeks, you will need to apply again. You may apply up to a total of 13 eligibility periods (26 weeks) between September 27, 2020 and September 25, 2021.

Eligibility criteria: You were not working for reasons related to COVID-19 or you had a 50% reduction in your average weekly income compared to the previous year due to COVID-19. You did not apply for or receive any of the following:

Canada Recovery Sickness Benefit (CRSB), Canada Recovery Caregiving Benefit (CRCB) short-term disability benefits workers' compensation benefits, Employment Insurance (EI) benefits, Quebec Parental Insurance Plan (QPIP) benefit, You were not eligible for EI benefits

You reside in Canada, You were present in Canada, You are at least 15 years old

You have a valid Social Insurance Number (SIN)

You earned at least \$5,000 in 2019, 2020, or in the 12 months before the date you apply

You have not quit your job or reduced your hours voluntarily on or after September 27, 2020, unless it was reasonable to do so Penalty You were seeking work during



the period, either as an employee or in self-employment Provincial course exception. You may work while receiving the CRB. You have not turned down reasonable work during the 2-week period you're applying for

Warning: Verifying your eligibility: The CRA will verify that you're eligible to receive the CRB. Individuals who are found to have intentionally made fraudulent claims may face additional consequences, such as penalties or possible jail time. It is recommended to check the eligibility before to apply to avoid any future consequences.

CN Tax & Accounting has ranked the status "Top Three Best Rated Accounting Firm" and "Best Accountants in Edmonton in 2020". CN Tax & Accounting provides supports for individuals and business owners for Tax & Accounting need and can be reached at 780-289-3870 for free a consultancy.

October is Breast Cancer Awareness Month

Breast health is part of your health and well-being. Breast cancer starts when breast cells become abnormal and start to grow out of control. Men and women may both develop breast cancer. A mammogram is an X-ray of the breast. It is one test that is commonly used to look for breast cancer. There are two types of mammograms. A screening mammogram looks for signs of breast cancer before any symptoms appear. A diagnostic mammogram looks for breast cancer in women who have symptoms. Or it is done if you had an abnormal screening mammogram. It's also used to find an area of suspicious breast tissue to remove for a biopsy. Surgery is a main treatment for breast cancer. Surgery is most often a lumpectomy to remove part of the breast or a mastectomy to remove the whole breast.



If you have been diagnosed with breast cancer and require surgery, breast surgery in Alberta is a same-day surgery, so you'll come to the hospital and go home (be discharged) on the same day.

Same-day surgery is safe and most people prefer to recover at home rather than in the hospital. Your surgeon will consider your health and living arrangements to make sure it's safe for you to go home the same day of your

surgery. In special cases, you may need to stay in the hospital overnight.

If you have been diagnosed with breast cancer, contact your local chapter of the Canadian Cancer Society or call 1-888-939-3333 to find a support group in your area. Talking with other people who have faced similar situations can be very helpful.

Content provided by: Alberta Health Services, myhealth.alberta.ca

Healthy tips for raising children



Raising children is a big job. It can be overwhelming to think about all the things your child needs to learn to stay safe and healthy.

In addition to teaching children good eating and activity habits, you can also teach them some basic health and safety habits.

Remember that your child learns habits by watching you. If you and the rest of your family follow healthy habits, your child will learn them from you. And if you have bad habits, your child will learn those too.

Good general habits for a healthy life

Help your children learn to:

- Think. Children need to learn that actions have

consequences. They need to learn the difference between fantasy and reality. Before your children act, encourage them to stop, take a breath, and think about the consequences.

- Talk openly. Encourage your children to talk about what is bothering them.

- Relax. Learn relaxation skills, and teach them to your children.

- Eat well. Encourage your children to learn about and enjoy healthy foods.

- Be active. Help your children find physical activities and hobbies they enjoy. Limit daily screen time (not including time for schoolwork).

- No screen time for children younger than two years

- One hour or less for children ages two to four years

- Two hours or less for children five years and older.

Preventing illness
Kids get dirty. They play with other kids who may be sick. Teaching them the following habits will keep them healthier:

- Wash your hands each time you use the toilet, after you blow your nose, and before you eat.

- Don't share hats, combs, toothbrushes, or other personal items with other children.

- Cover your mouth when you cough or sneeze.

- Don't touch other children's blood, urine, stool, or other body fluids.

New bus stop signs prepare riders for new network

Starting October, residents will start to see new bus stop signs around the city but current bus routes will remain the same. These signs are a key step in preparing for the new bus network launching on April 25, 2021. City crews are starting to install the new signs now because it will take several months to change over all 7,000 signs.

The early timing will also allow customers to get familiar with the new sign design and future new route numbering system. The user-friendly signs incorporate universal accessibility standards so they can be easily seen by a wide range of people. Customers should take note of the coloured temporary stickers on the signs that indicate if

the stop will be opening, closing or routes will be changing in spring 2021.

These new bus stop signs indicate a significant and exciting transit change is coming that will give Edmontonians access to a more direct, more frequent and better connected bus service. "The new bus network is part of Edmonton Transit's ongoing efforts to modernize public transit to meet today's needs and provide a foundation that connects to future changes as the City grows to two million people," said Eddie Robar, Branch Manager of Edmonton Transit Service.

Customers can also find information about the new bus stop signs and network bus routes at edmonton.ca/newbusroutes. Individual bus route maps and schedules will be available online in early 2021



Word search

SUN
URANUS
NEPTUNE
EARTH
MARS
MERCURY
JUPITER
VENUS
SATURN



U	R	A	N	U	S	U	E
A	M	B	X	N	A	P	A
M	A	R	S	J	T	J	R
E	G	Y	N	P	U	U	T
R	C	V	E	T	R	P	H
C	V	E	P	U	N	I	E
U	I	N	T	W	H	T	W
R	U	U	U	F	J	E	S
Y	P	S	N	H	Q	R	U
L	Z	O	E	K	R	T	N

Helping 470+ businesses with the Edmonton Economic Recovery Grant Program

In June, the City quickly responded to the growing needs of Edmonton businesses impacted by COVID-19 by creating the Economic Recovery Grant Program. In the last three months, the City has provided financial assistance to more than 474 local businesses, awarding more than \$502,000 in grants to individual businesses. Additional grant funding is still available.

The top three industries accessing individual business grants are:

Accommodation or food service (23 per cent)

Other services (including personal services) (22 per

cent)

Healthcare and social assistance (15 per cent)

The top three ways that businesses are using individual business grant funding are:

Personal Protective Equipment (PPE) or cleaning supplies (57 per cent)

Updating or establishing an online presence or e-commerce (12 per cent)

Marketing or advertising (11 per cent)

Grant streams currently available:

Individual Business Grants

\$1,000 in matching funds provided directly to local busi-

nesses. The money can be used for urgent needs to help individual businesses quickly recover from COVID-19.

Organization Grants

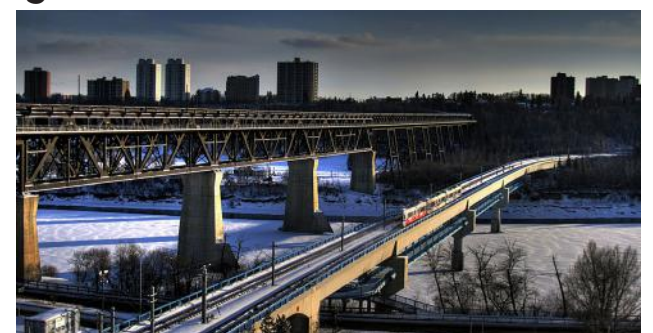
Up to \$75,000 for business associations, organizations and economic development groups to support the local economy and small businesses in their relaunch.

To date, the City has awarded three grants for organizations totalling \$178,896 in COVID-19 relief. We are currently working with another two approved organizations to fund their programs to support local businesses, and are reviewing five additional ap-

plications.

This innovative grant program is like none at the City before—created to address evolving needs while helping businesses relaunch and recover.

“From the start, this program was developed for businesses,” said Stephanie McCabe, Deputy City Manager of Urban Form and Corporate Strategic Development. “The commitment has remained to support businesses because of their importance in the community and how supporting them is essential to supporting people and our vibrant urban places.”



Grants under both streams are still available. Businesses that have experienced challenges because of COVID-19 can visit edmonton.ca/businessgrants to apply.

Eligible businesses are encouraged to apply for the

funds that are available now.

The Economic Recovery Program is part of the City's ongoing work to support Edmonton's economic recovery, contribute to the community's vitality and prosperity and drive local job creation.



Dunluce Community League News

DUNLUCE EXECUTIVE
P.O. Box 36050 Castledowns RPO,
Edmonton AB T5X 5V9 Dunluce Hall: 11620-162 Ave.
780-456-3978 www.dunlucecl.ca

PRESIDENT	Keoma McMurren	780-457-9101
VICE PRESIDENT	Mark Gross	780-456-5700
TREASURER	Loretta Wonitoy	780-457-9101
SECRETARY	Lorna Melnyk	780-456-4596
PAST PRESIDENT	Nadine Meads	780-982-6260
CDRS REP	Ryan Korpesio	780-444-9212
	Carla Korpesio	780-444-9212
VARIETY SHOW	Denyse Ward	587-983-9401
	Sabrina Jackson	780-232-1925
CASINO	Maureen Ewart	780-457-0708
	Mark Gross	780-456-5700
MEMBERSHIP	Christina Fletcher	780-484-3051
PUBLICITY	Bev Gross	780-456-5700
SOCIAL	Lorna Melnyk	780-456-4596
BINGO DIRECTOR	Amanda Wentzell	780-977-7923
SOCCER	Dana Trendall	780-504-0701
SOFTBALL	Loretta Wonitoy	780-457-9101
PROGRAMS	Registrar	780-914-1775
WAYS & MEANS	Lisa Love	
SOCCER EQUIP.	Arlene Pettifer	780-456-3978
BUILDING & ASSETS	Al Chapman	780-456-9292
PLAYSCHOOL	Registrar	780-499-0232
COMMUNITY SERVICES	Rochelle Diederichs	
HALL RENTALS	Al Chapman	780-457-4342

DUNLUCE COMMUNITY LEAGUE 2020 HALL RENTAL RATES

For information call: (780) 457-4342 or e-mail:

hallrental@dunlucecl.ca
HALL IS NEWLY RENOVATED
*** SEATING CAPACITY 120 ***

WEEKEND RATES:

Dunluce Community League Members:

6:00 PM Friday evening until 5:00 PM Sunday evening,
\$350.00 plus \$500.00 damage deposit.

Non – Dunluce Community League Members:

6:00 PM Friday evening until 5:00 PM Sunday evening,
\$450.00 plus \$500.00 damage deposit.

DAILY RATES (WEEKENDS ONLY)

Saturday 9:00 AM until Sunday 9:00 AM (24 Hr. Rental)
\$500.00 damage deposit

Dunluce Community League Members: \$250.00

Non – Dunluce Community League Members: \$350.00

Hourly Rate: \$50.00 per hour. (3 hour minimum)

Hourly rate is only available Monday to Thursday.

Damage Deposit equal to rental cost.

In order to obtain the Member rate, you will be required to have held a valid Dunluce Community League membership for at least 1 year prior to your booking.



Castledowns Dental

General Dentistry

Dr. Matthew G Ploboda D.D.S.

Family Dentistry Just Minutes Away

New Patients Always Welcome
Direct Billing • Invisalign
Cerec • Nitrous Oxide
Dental Implants



#202, 15961 - 97th Street NW

780-456-4441

FOLLOW US! LIKE US!

Never miss another community event or announcement by liking our "Dunluce Community League" Facebook page and following us on twitter (@dclieg)



Upcoming Bingos



If you have an upcoming Bingo please see dates below. You will also be receiving a call as a reminder. If you have any questions or you have not received a registration bingo date, call: Amanda: 780-977-7923

Dates are as follows:

November 15th & December 8th 2020,
January 4th 2021

All Bingos are at Kensington Bingo Hall unless otherwise stated.



Lorelei-Beaumaris Community League News

LORELEI BEAUMARIS HALL RENTALS 16220 – 103rd Street

Lorelei-Beaumaris Community League has the largest Hall facility in Castle Downs.

- Hall dimensions are approximately 60 ft x 52 ft (bar to wall)

- Accommodation for 448 guests (non-fixed seats), 354 (non-fixed tables & seats), 280 (dining and beverage).

- Air conditioned, pot lighting, coatroom, wheelchair accessible washrooms

- Raised stage setting (stage dimensions 13 ft x 20 ft wide)

- Stage risers for the floor area (Risers consist of 5 units (ea 4' x 8') for a total raised floor stage setting of 20' x 8', grey carpeted & black skirting - \$100 with main hall rental)

- Black Lectern (podium)

- 30 - 5ft round tables, 40 - 6ft rectangular tables 2 - 3ft accent tables

- Full, commercial kitchen with natural gas stove & ovens

- Spacious wet-bar area with bar-fridge and ice machine

- Large BBQ available (cooks up to 65 burgers or 126 hotdogs all at once)

- Multimedia system available for powerpoint, slideshows, videos, etc...

- We do not have linens or chair covers. Event rental companies will be able to assist you with these items.

NEW HALL RENTAL RATES:

- \$1000 – full weekend: Friday, Saturday, Sunday

(Note: Sept - May full weekend bookings must be made at least 8 weeks in advance)

- \$400 - Friday

- \$600 - Saturday

- \$350 - Sunday

- \$50 - extended hourly rate / week day hourly rate

- Sound System INCLUDED into all rentals



- \$35 – music (if recorded music of any sort is played - Socan & Resound tariff)

- \$100 - 20'x8' floor level stage risers (carpeted and skirted)

- \$100 – Large BBQ (cooks up to 65 burgers or 126 hot dogs at once)

- \$50 – dishes rental (plates, cutlery, glassware, limited small wares)

- Deposits: for single day or hourly rentals - \$500; for full weekend rental - \$750

All Rates include GST

* Please note that all contracts signed for hall rentals will be required to purchase Renters Insurance for their event date at Lorelei Hall. We will give them the link to FPB Insurance to do this online. *

* Discounts may be available to LBCL Members who are booking for their use. Please talk to the hall manager for more information.

Feel free to call Maria 780-686-4415 for questions regarding hall rentals or to make an appointment to view the hall. Leave a detailed message or email hallrentals@lbcl.ca for more information.

For more photos of our hall please visit our website at www.lbcl.ca or our Facebook page at <https://www.facebook.com/loreleibeumaris>

City unveils new snow clearing parking ban, launching winter 2020

The City of Edmonton is implementing a new, two-phase citywide parking ban this winter.

"We have heard from residents that they want improved snow clearing in their neighbourhoods," said Brian Simpson, Branch Manager, Parks and Roads Services. "This parking ban will allow for clearer roads that are easier and safer to navigate for everyone using our streets."

The new two-phase parking ban will take effect this winter, and consists of the following:

Phase 1: Crews clear arterial and collector roads, bus routes and business improvement areas. You may continue to park on your residential street.

Phase 2 (begins after Phase 1): Crews clear residential and industrial roads. You may park in your driveway, in a parking space on a neighbour's property with their permission, or on any road cleared during Phase 1 where parking is allowed normally.

In both ban phases, parking will be allowed on any road as soon as it has been cleared. Previously, the public had to wait for the City to call off the ban before parking back on the street.

Phase 1 is anticipated to last approximately 48 hours. Phase 2 would last five to seven days overall, but the impact to individual communities is expected to be less time - approximately 72 hours. In each phase, residents would be able to park on the street once it has been cleared.

"We know this is going to be an adjustment, and this is going to require a community effort," said Simpson. "To keep our streets safe in the winter, we must work together. Edmontonians play an important role in supporting City staff and contractors by moving their vehicles off the street during snow plow events."

The City will focus on education before enforcement, but warnings and fines continue to be options to gain compliance when required. The fine for not following the parking ban is \$100, and towing will continue to be used in limited circumstances.

The City is encouraging the public to sign up for parking ban email alerts, and to view a new interactive map that will display which ban phase roads are a part of at edmonton.ca/SafeTravels.

New measures to combat COVID-19



The City is introducing additional measures to contain the spread of COVID-19 and help protect the people of Edmonton, in response to the voluntary health restrictions introduced in the Edmonton Health Zone by the province.

"We continue to be concerned by the continuing increase in case numbers. We need all Edmontonians to adhere to the health precautions and practise them daily to prevent COVID-19 case numbers from increasing any further," said Interim City Manager Adam Laughlin. "As the COVID-19 pandemic wears on, we will not let it wear down our resolve to protect our city, including our most vulnerable community members."

Dr. Deena Hinshaw, Alberta's Chief Medical Officer of Health, announced new voluntary restrictions in Edmonton last week. The City's response includes enhanced measures in recreation facilities, additional monitoring and enforcement of public compliance to health and safety rules, and adjustments to ETS service levels and cleaning protocols.

"While we haven't seen it reflected in case numbers yet, we trust Edmontonians are getting the message," said Laughlin. "Compliance with mask wearing is strong. I trust that Edmontonians will adopt the City's adjusted measures with the same spirit of shared responsibility. We've already heard from some sports organizations who are willing to help us spread the word about new protocols at arenas. By working together, we can tackle the rising case numbers and contain the spread of COVID-19."

Recreation Facilities

The City will make a number of enhancements to protocols and guidelines in recreation facilities and arenas.

There will be no spectator access in areas without designated spectator seating, such as field houses, gyms and most pools.

In facilities with designated, controlled spectator areas, like arenas, 25 percent of regular seating capacity will be allowed (up to 50 spec-

tators, 100 in larger arenas). New capacity figures have been posted to arena websites.

No social event rentals (parties, reunions) or picnic site bookings will be allowed for the remainder of 2020 to discourage larger social gatherings.

Capacity for other indoor bookings and rentals, such as business meetings, has been reduced to 25 per cent of normal room capacity to a maximum of 50 people.

Increased security and crowd monitoring will be implemented at facilities to ensure safety protocols are being followed.

Edmonton Transit Service

New measures adopted by ETS include:

Adjustments to ETS service levels, including school service, to support physical distancing and gathering restrictions.

Revised sales channels for low income transit pass sales that reduce the need for in-person contact.

Same-day cleaning and disinfecting of bus shelters located near schools when notified of a school outbreak.

Temporary Pandemic Accommodation

Preparations are underway for the use of the Edmonton Convention Centre as a temporary pandemic accommodation for individuals experiencing homelessness. People who stay at the convention centre will have a safe, warm place to sleep, receive daily meals and access storage, washrooms, shower facilities and culturally appropriate health, wellness and housing supports. The space is expected to open on October 30 and will scale up week by week to reach a 300-bed capacity and to provide a full spectrum of services.

The City is working with organizers of Camp Pekiwin to ensure safe, suitable accommodation like the Edmonton Convention Centre for those staying at the camp. An end date for the camp is linked to the activation and full operational setup of the temporary pandemic accommodation.

EXTREME EDGE SKATING CLUB

PHYSICAL DISTANCING
&
SAFETY
IS OUR PRIORITY



Parent & Tot

- 3 Years of Age & Older
- First Time and Beginners
- Parents are invited to skate and assist their child toward independent skating.

Group Skating Lessons

- 4 Years of Age & Older
- Beginner to Advanced
- Small Class Sizes



Adult Skating Lessons

- Intended for adults that wish to experience skating and those who would like to improve existing skills in a fun, judgment-free environment.

Learn to Figure Skate

- 4 Years of Age & Older
- Small Class Sizes
- Learn the fundamentals of figure skating in an encouraging and enthusiastic atmosphere.



Advanced Figure Skating

- Experience some of the best skating coaches and trainers in Alberta with national and international experience.
- Dedicated athletes progress through various levels of Figure Skating towards personal excellence.
- Recreational to National Level Skaters

EXTREME EDGE
SKATING CLUB

- W: ExtremeEdge.ca
- E: Extreme.Edge@shaw.ca
- P: (780) 456-6851
- Locations:
Londonderry Arena: 14520-66 Street
Clarview Arena: 3804-139 Avenue



Preschool & Kindergarten

Spots Available

We're following all necessary guidelines set by AHS in regards to COVID and children in school. Our staff are working hard to keep all children safe.

A comprehensive early education program for 3 to 5-year olds.

- Small Class Sizes • Professionally Qualified Teacher (B.Ed.)
- Trained Teaching Assistants • A Fun, Friendly, Safe Environment

13931 – 140 St, NW Edmonton 780.473.7216

the
Gutter Doctor

WE INSTALL
EAVESTROUGH, FASCIA & SOFFIT
COMMERCIAL GUTTER CLEANING
5 YEAR GUARANTEE ON INSTALLS
780-709-6825
info@gutterdoctor.ca

15,000
HAPPY
CUSTOMERS!

Summit
Life
Church

EVERYONE WELCOME

Sundays

10:30 am

Lago Lindo
Community League

For more information check out
www.summitlifechurch.ca
or contact at
summitlifechurchyeg@gmail.com