

COMMUNITY LEAGUE NEWS SOUTH

Serving the community leagues of
Strathcona Centre, Argyll, Garneau, Hazeldean and Ritchie.



Published by Calder Publications. For advertising please call 780-434-9732 or email info@communityleagueneews.com

Ice on Whyte is back January 2016

The Ice on Whyte festival returns to Strathcona January 21, 2016. The Strathcona Centre Community League is pleased to be partnering with the festival again, welcoming the international ice carving competition, nightly entertainment and winter fun to our neighbourhood.



Below are some details about the 2016 festival. Please check our website strathconacommunity.ca for more details as they become available or are updated, and the Ice on Whyte website iceonwhyte.ca for festival details.

Any questions or comments are most welcome by emailing community@iceonwhyte.ca, or phoning 780-439-1501.

WHEN is the Ice on Whyte festival?

Dates: January 21-31, 2016 (running Thursday, January 21 - Sunday, January 24 and Thursday, January 28 - Sunday, January 31)
Hours: 10am to 10pm

WHERE does Ice on Whyte take place?

End of Steel Park, Strathcona Park, and Strathcona Centre Community League (all right around 87 Avenue, Gateway Boulevard and Tommy Banks Way)

HOW WILL THIS AFFECT LOCAL RESIDENTS?

Tommy Banks Way will be closed to traffic and pedestrians January 13, 2016 remaining closed until after the festival (February 2, 2016). The festival area will be fenced-in early to mid-January for construction of the site.

WHERE IS THE ALTERNATE WALKING PATHWAY?

There will be signage directing users of End of Steel Park around the Strathcona Community Hall once the site fences go up. The walkway will lead you along the sidewalk on 87 Avenue through the Strathcona Centre Community League grounds to Tommy Banks Way.

QUESTIONS?

Communication points are set up for the neighbourhood and are monitored by Ice on Whyte and the Strathcona Centre Community League.
Phone: 780-439-1501 or Email: community@iceonwhyte.ca



Best wishes from the Board members of the Argyll, Garneau, Hazeldean, Ritchie and Strathcona community leagues to all for a safe and Merry Holiday Season, and an active New Year!

Argyll's Robbie Burns Silent Auction

January 23rd 2016

This is a fun family event to help raise funds for the Argyll playground project. Ticket for Adults – \$30.00 (each). Children aged 6 to 11 years are \$15.00 (each). Kids under 5 years are free. The Silent Auction continues from 5:30 PM through to 9:30 PM. Dinner catered by D & H Catering. Dinner starts at 6:00 PM. Includes Scotch Tasting, a bagpiper, cash bar, and a dance performance by Celtic Ceilidh around 7:30 PM. Music provided by a DJ from 7:30 PM to 12:00 AM



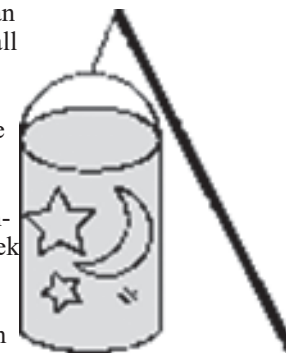
Contact Nikki Maurer — 780.469.8569 or nikkimaurer@shaw.ca for tickets.

This is an Argyll residents only event in case you're reading this from outside our neighbourhood.

Hazeldean Lantern Parade

January 23, 2016

Lantern building: 4:00 pm
Millcreek ravine walk: 5:00 pm
Mark your calendars for the inaugural Hazeldean Lantern Parade. By January, we have had 3 months of Edmonton's long winter nights so it will be time to welcome back the light! Join your family, friends and neighbours at the Hazeldean Community Hall to create your own lantern. Then we'll take our creations and wander down the greenway to Millcreek ravine to show them off! Bring your own travel mug so that you can have some hot chocolate and cider.



There will only be supplies to create 100 lanterns so come early!

minsos | stewart | masson

barristers, solicitors, notaries

PH: (780) 466.1175

Fax: (780) 465.6717

#220, 8723 – 82 Avenue

Edmonton, Alberta T6C 0Y9

• Real Estate

• Wills and Estates

• Business Law

Strathcona Centre News

Address: 10139 – 87 Avenue, Edmonton, Alberta T6E 2P3

website: www.strathconacommunity.ca

STRATHCONA CENTRE

President	Jeff Samsonow 780-984-1687 president@strathconacommunity.ca
Vice-President	Ross Goodine 780-432-3732 vicepresident@strathconacommunity.ca
Treasurer	Colleen Taralson 780-477-0656 treasurer@strathconacommunity.ca
Secretary	VACANT secretary@strathconacommunity.ca
Membership Co-chairs	Lois Hameister 780-439-5774 Jeanie McDonnell 780-433-0521 membership@strathconacommunity.ca
Communication Committee	VACANT communication@strathconacommunity.ca
Programs Committee	Dustin Meunier programs@strathconacommunity.ca
Social Chair	Jeanie McDonnell 780-803-0900 social@strathconacommunity.ca
Soccer Co-chairs	Conrad Nobert Simon Thomas strathcona@southeastsoccer.ca
Civics / Planning	Grant Moore 780-434-3772 civics@strathconacommunity.ca
Safety Committee	Brenda Reid safety@strathconacommunity.ca
Building and Grounds	Benjamin Tucker grounds@strathconacommunity.ca
Green Initiatives	Brenda Reid green@strathconacommunity.ca
Community Garden	Kelly Binnington garden@strathconacommunity.ca
Hall Use Committee	Jeanie McDonnell 780-803-0900 hall@strathconacommunity.ca
Community Liaison	Kelly Fox John Watson
Community Hall	Helen Gillespie 780-439-1501
Website Manager	webmaster@strathconacommunity.ca
Information	info@strathconacommunity.ca

Board meetings are held on the second Monday of each month, September to June, at 7:00 p.m. All community league members are welcome to attend. For more information phone 780-439-1501 or e-mail at info@strathconacommunity.ca

To join our community e-mailing list, contact sccl.social-request@lists.gno.org. This list enables the Community League to deliver information about programs and community events to our members in a timely and reliable manner, and enhances our ability to develop and deliver these programs. Postings to the list are screened, and are kept to a minimum.

The Strathcona Community League is on Facebook. Follow us on Twitter @StrathconaCL

If you can help with any of the vacant positions, please contact a member of the executive.

The copy deadline for the Feb/Mar 2016 issue of Community League News is Jan 18, 2016. Please contact Donna Fong, Newsletter Editor, at 780-433-5702, or by e-mail at donnaafong@shaw.ca

Hall Rentals

- **Main Hall:** Max capacity 105. With tables and chairs will hold fewer people (number will depend on set up). Amenities include hardwood floors, balcony, stage, and a bar. \$150 - \$400
- **Lounge:** Seats 30 -35. Overlooks the End of Steel Park and sunsets over the river valley. Amenities include a bar, fireplace, television and piano. \$75 - \$260
- **Concession/Small Meeting Room** A small meeting room (concession) on the main floor seats 10-12. \$20 - \$75

To check rental availability and for rate details, visit www.strathconacommunity.ca/facilities/hall-rentals. To rent hall facilities, please download and review the Hall Rental Agreement Form (PDF) and contact Helen Gillespie, Hall Manager, at 780-439-1501. If you need clarification on any item, please email hall@strathconacommunity.ca. However, all rental agreements are made with the hall manager. Community League members of at least 6 months receive a discount on rates. Rentals are not confirmed until payment is made and the rental contract signed. If your event is public, we can help you advertise. Contact the hall committee chair to have your event posted to our website.

Social Reports

By Jeanie McDonnell, Social Chair
Pub Night: Friday, December 18th is Pub Night. Come to the hall, bring a snack to share if you like, visit with neighbours and maybe sing a carol or two. We will have a family pub night in January or February (with skating and hot dogs, starting earlier), so check the website later for updates, or call the hall.
Winterfest: Mark your calendar for Sunday, February 14, 2016, 2 to 5pm. We will have the usual carnival games, burgers, and sleigh-rides, as well as our Cook-off competition. We'll be looking for dessert entries again this year - lots of great prizes to be had! We always need volunteers to give us a hand, so let us know if you can help out. Email social@strathconacommunity.ca, or phone Jeanie at 780-803-0900.

Casino Crew: A Big Thank You!

The Board owes a big thank you to the following Strathcona Community folks who volunteered for a casino shift in October.

Ann Matheson, Anne Huennemeyer, Barbara Dacks, Barry Hickie, Betty Grudnizki, Bob St. Clair, Carolyn Nutter, Charlie Letourneau, Chris Dodd, Conrad Nobert, Debbie Chaba, Donna Peterson McGuire, Ellen Homola, Fons Schellekens, Gillian Rutherford, Gloria Letwin, Grant Moore, Gurston Dacks, Jade Dodd, James Feeney, Jeanie McDonnell, Kelly Binnington, Lois Hameister, Maarten Ingen-Housz, Manfred Popke, Melanie Kidder, Nicole Chatterton, Patrick Moore, Philippe Marcoul, Rakesh Bhat, Rechel Amores, Robert M. Campbell, Roger Tassie, Ross Bradford, Theresa Shea, Vic Yanda, Vicki Williams, Wolfgang Engler

Casino Coordinator Nikki Van Dusen handled the volunteer coordination and event logistics. "I am in awe of how dependable and diligent our members and friends are in this community. Once again, our casino event went off without a hitch. Thank you!"

Exact earnings aren't known yet. The Alberta Gaming and Liquor Commission (AGLC) requires groups conducting casino events in Edmonton to pool net proceeds and losses within a calendar year quarter. An October casino date puts the league in Q4 2015, so the League won't hear an exact amount until 2016. However, past casinos have netted approximately \$75,000 per event. The Strathcona Community League uses casino revenue to run various programs and services, maintain the hall, and buy sporting and activity equipment.

The league has already applied for its next casino and once again requested the conveniently located Casino Edmonton on Argyll Road. The AGLC has awarded the league a casino event in the 3rd quarter (July – September) of 2017.

Newsletter Volunteers

The Strathcona Centre Community League is grateful to our dedicated team of volunteer newsletter carriers who deliver Community League News South. Many thanks to Andrea Hamilton, Colleen Taralson, Blair Dickout, Dilshad Unwala, Don Law, Don Spence, Donna Fong, Frank Burgess, Fred Demers, Helen Gillespie, Iris Barrington-Leigh, Jan Hodge, Jeanie McDonnell, Johanna Law, Kay Harper, Kim Fong, Lois Hameister, Mary Tweedie, Neil McBain, Ron Ries, and Sadiq Unwala.

SCCL President's Report 2015

By Jeff Samsonow, President

Here are some of the highlights of the last year in the Strathcona Community League, as reported to membership at our AGM in November.

New logo

Thanks to a group of MacEwan University student designers, we now have a historic streetcar logo which can be included in all of our league correspondence, online and social media identities, and on items like flags and signs. It's a fantastic nod to our neighbourhood's transit past and helps us stand out among other organizations in Edmonton (not to mention the other community leagues).



New bookkeeper

The work of the board on behalf of the league has been made easier with John Rhebergen being hired to track and reconcile our monthly finances. This will allow the board's treasurer to focus on the bigger picture of league finances and fiscal planning.

Festivals

Ice on Whyte was back in 2015 and is about to hold its 5th festival at End of Steel and Strathcona Parks. We're happy to see so many people enjoying our neighbourhood in the winter; it's great to be one of the early adopters of Edmonton's winter city strategy.

Edmonton Pride Festival returned home to its Old Strathcona roots in 2015, with the parade winding its way down Whyte Avenue toward End of Steel and Strathcona Parks and King Edward School.

While this event had plenty of excitement, it did raise some questions from neighbours about more large events in the neighbourhood and the pressures that is putting on street parking and traffic flow. The board is happy to announce a new "Community and Neighbours" committee will take on the growing task of working with neighbourhood events like Fringe, Pride, Ice on Whyte, etc. so we can be more involved in the discussions and planning and less reactive once things are underway or over.

Transportation Networks

The board's been supportive of the work to produce a cycle track and bike route on 83 Avenue. Construction should begin next year, helping even more people cycle year-round.

The board has been supportive of the Engage 106-76 project, centred in Queen Alexandra as part of their neighbourhood redevelopment. This project has taken new approaches to community consultation and could be a good roadmap for laying out our neighbourhood's plans for redevelopment slated for 2019.

And the board also backs the efforts of the Reboot Whyte campaign. Our city's signature street should be among our safest. One to two people are seriously injured or killed every month on Whyte Avenue and it's time to build upon the City of Edmonton's own Complete Street guideline (and work on 83 Avenue and Engage 106-76) to balance transportation needs for everyone, regardless of their mode of transportation, so everyone gets to and from their destinations in Old Strathcona safely.

The board was also more than happy to support a plaque installation at Nutter's Corner on 99 Street (at 86 Avenue) in honour of longtime neighbourhood volunteers Butch and Carolyn Nutter. It's a great spot to stop and rest, highlights a pair of fantastic residents and is just the right kind of "meeting place" more of our streets need. Thanks, of course, goes to the volunteers who coordinated this effort!

League Programs and Activities

YOGA CLASSES

These holistic yoga classes are perfect for beginners as well as those with previous yoga experience. Yoga postures, breathwork, and meditation will be taught to promote balance in the body, mind and spirit. Throughout the session, students will develop an understanding of alignment and breath while developing physical strength and flexibility. All levels are welcome!

Instructor: Kyla Fischer lives in the Strathcona Community and has been practicing yoga for over 14 years. She holds RYS 200 Yoga Teacher Training certification and has experience in various styles of yoga including Hatha, Akhanda, Restorative and Yin. Kyla is committed to life-long learning as a student of yoga and is honoured to share the joy and peace that yoga offers.

Strathcona Centre Community League
10139 - 87 Avenue (second floor)

Winter session:

Tuesday, 9:30 – 10:45am

Jan 12–Feb 23 (7 classes)

Fee: \$84.00

Thursday, 9:30 – 10:45am

Jan 14–Feb 25 (7 classes)

Fee: \$84.00

*Sign up for both Tuesday and Thursday classes for \$154.00

To register: email Kyla Fischer at fischerk@telus.net or call 780-430-0229.

SOCCER PROGRAM

If you have questions about soccer, please email our league contacts at strathcona@southeastssoccer.ca. For soccer news, visit www.southeastssoccer.ca

PUB NIGHTS

Pub nights are held on the 3rd Friday of each month, 8 pm. Meet in the Lounge, upstairs at the Strathcona Centre Community League, 10139 87 Ave (use south door). It's casual, and a great way to unwind from the week and meet or reconnect with others from the community.

For announcements about upcoming social events, meetings, and news, subscribe to the feed at <http://strathconacommunity.ca/feed/> Contact social@strathconacommunity.ca if you have any questions.

STRATHCONA PLAYGROUP

Feeling housebound now that the weather is getting cooler? Bring your child/ren to playgroup!

The Strathcona playgroup hosts a playgroup (September-June) twice a week at the hall, 10139 – 87 Avenue. Enter via the ramp on the north side of bldg.)

- Mondays and Wednesdays, 10am till noon (closed on school holidays)
- Free but you must be a member of a community league (memberships sold on site - \$20/family)
- Large room for the kids to run around, lots of toys to play with
- Bring a snack for the kids, and a coffee for yourself
- Meet other parents/caregivers
- Any age welcome – babies, toddlers, pre-school

For more information, contact programs@strathconacommunity.ca

Strathcona Tender Loving Daycare

#102 9932-81 Ave



Now accepting registrations for children 0 months to 6 years

Planned activities by certified caregivers, nutritious meals, clean, bright accredited centre. Subsidy available.

Call 780-756-0026 for a tour



2015-2016 League Memberships on Sale

If you would to purchase a membership, contact Lois 780-439-5774 or Jeanie 780-803-0900. Memberships are also available for sale from the hall manager. For more information about memberships, visit www.strathcona-community.ca/league/membership. Annual membership fees are \$20/family, \$15/single, \$5/senior.

What does the Strathcona Community League Membership give you?

- Sports: Soccer, skating
- Discounts: Community League Wellness Program, Ice on Whyte
- Pub Night - usually the third Friday of each month at the community league. Meet your neighbours.
- Playgroup - held at Community League hall Mon. & Wed. mornings.
- A voice in your community - transportation, zoning, housing.
- Free swimming at Edmonton's outdoor pools (certain times)
- Social events - community picnics, winter carnival, etc.

Discounts/Community Swim: Your membership can be used to get a discount when purchasing a multi-use pass at City of Edmonton recreation centres (e.g., Kinsmen). Go to the City of Edmonton website and search for Community League Wellness Program for details. And there will be free community swims at outdoor pools for members next summer.

Soccer Registration

The 2016 Outdoor Soccer Registration for Strathcona community members will take place at the Strathcona Community Hall.

→Wednesday, February 18

7-9 pm

Tuesday, February 24

7-9 pm If you are not able to attend either of these sessions, please attend the zone-wide late registration on Saturday, February 28th, 10:00 a.m. - 2:00 p.m., at Bonnie Doon Mall (near Tony Roma's), 8330 82 Avenue.

Community Planning and Civics

Grant Moore, Chair of the Civics and Community Planning Committee, maintains a database of building developments, planning and transportation issues, urban design projects, and community initiatives. If you would like more information, please contact Grant at 780-434-3772, or email civics@strathconacommunity.ca

Scona Road Traffic Safety Open House

The City of Edmonton will update residents on recent traffic safety studies and initiatives for Scona Road, 99 Street and Saskatchewan Drive.

Monday, January 18, 2016

5:30pm - 8:30pm

**Strathcona Community League hall
10139 87 Avenue**

For more information contact Shewkar Ibrahim, Traffic Safety Engineer, with the Office of Traffic Safety at shewkar.ibrahim@edmonton.ca or phone 780-495-0368.

Development Permit Compliance

The City of Edmonton does not do routine checks to ensure that new developments follow regulations. To a great extent, the city relies on leagues and nearby neighbours to report building developments which are not in compliance with regulations in the zoning bylaw and the development permit.

Call 311 with your inquiry if you suspect abnormalities. Perhaps a building appears abnormally large or too close to the property line, or you are concerned about other problematic irregularities.

Community Rules at King Edward School

Located in the centre of Strathcona, King Edward School has a strong community working to support it. Students and their families share a strong connection with the building and the education it provides our youngest citizens.

Several parents and community members recently donated their time to participate in the school's Career Pathways initiative, where students are encouraged to think about how their education connects to the career path they will eventually follow.

Assistant Principal Eileen Rygus is enthusiastic about the program's potential. "It answers the big question students ask all the time in class - why do we need to learn this?" Volunteers including school trustee Bridget Stirling and engineer Bruce Firtzpatrick all spoke to students from K-6 about the connection between their school experience and their own careers, and got students thinking about how the skills they will need in whatever job they hold relate to what they're learning now.

The school was also honoured to welcome the Premier Rachel Notley during Read-In week. The Premier is the parent of a King Edward alumnus and the MLA in our riding, and read Mouseland by Tommy Douglas to grades 5 and 6 students in the Elementary School and King Edward Academy.

The school is looking forward to its upcoming community-focused ventures including the winter artist-in-residence program, and, when spring comes, there will be busy activity around the community garden in the school playground. Built by parents and volunteers, the garden will give students some hands-on experience into making things grow.

Rink Hours of Operation

Skating hours at the Strathcona Community League rinks, 10139 87 Avenue are as follows:

Christmas/holiday schedule:

During the school holiday break - Dec 21 to Jan 1 - the rink is open:

- Weekdays from 1:00pm till 8:00pm, except:
- Weekends as per the schedule below
- Dec 24, 25, 26, 31, Jan 1 - No set hours - contact Ann (780-433-0767) or Jeanie (780-803-0900) to have the building opened or the lights turned on.

Go ahead and skate whenever you want if you don't need to access the building/rink lights on.

On January 4th, regular hours resume (see below). Watch for the kick-off of the Friday Fun Skate in early December or January - depending on ice conditions.

Small Rink; Skating

Monday, Tuesday, Wednesday, Friday; 3:30-9 pm

Thursday; 2:30-9 pm

Saturday & Sunday; Noon-6 pm

Small rink unavailable during Ice On Whyte Festival (Jan 21 - 31).

Hockey Rink

• Monday

Parent/Children, 3:30-7 pm

Adult coed hockey, 7-9 pm

• Tuesday

Parent/Children, 3:30-9 pm

• Wednesday

Parent/Children, 3:30-7 pm

Adult coed hockey, 7-9 pm

• Thursday

Kids scrimmage, 2:30-6 pm

Parent/Children, 6-9 pm

• Friday

Fun Skate, 3:30 pm-9 pm (no hockey)

• Saturday

Parent/Children, Noon-4 pm

Adult coed hockey, 4-6 pm

• Sunday

Parent/Children, Noon-4 pm

Adult coed hockey, 4-6 pm

Skaters are welcome on the ice prior to opening times if ice maintenance is not in progress. Shovelling may be required.

Holy Trinity Anglican Church Christmas Services

10037 84th Avenue NW

780-433-5530

www.holytrinity.ab.ca

December 24th:

- 4:30pm: Christmas Eve Family Service. Perfect for families with young children.
- 7:00pm: Christmas Eve Communion Service.
- 11:00pm: Christmas Eve Eucharist with organ and full choir.

December 25th:

- 10:00am: Christmas Day Eucharist service with organ and sung carols.

All are welcome

Discovery Daycare

Place of Fun and Learning



- Subsidy available
- Accredited daycare
- Infants to 6 years old
- 7 am to 6 pm

8703 91 Street

780-468-3475



Belgravia Hub
FOOD & DRINK

Now Open
for Lunch

Leslie McGlennon
Chef | Owner

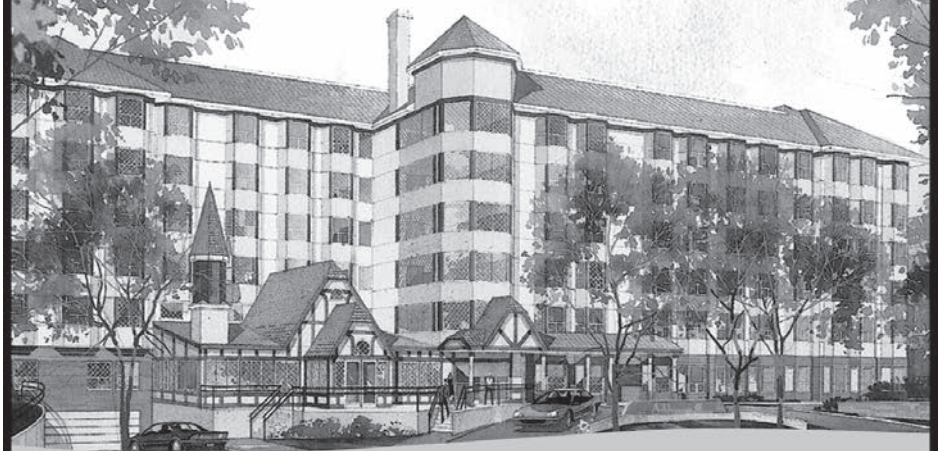
7609, 115 Street
Edmonton, Alberta
780 756 3344
www.belhub.com

Contemporary Comfort Food
Beer & Wine

Ashbourne
A GARNEAU UNITED COMMUNITY

Assisted living at its finest

Ashbourne offers a wide selection
of services and activities designed
to fit *your* lifestyle in a safe,
secure and friendly
environment



For more information
or to arrange a tour,
please contact us:

(780) 430-5800

11148 84th Avenue www.theashbourne.com

Celebrating more than 15 years in the community



Rachel Notley, MLA
Edmonton-Strathcona

Strathcona Professional Centre
Suite 101 10328 - 81 Avenue
Edmonton, AB T6E 1X2
Phone: (780) 414-0702
edmonton.strathcona@assembly.ab.ca



LEGO BIRTHDAY PARTY

*LEGO® Building
Birthday Party
Packages on Sale*

We come to you and bring all
of the supplies and models
to help your child celebrate
their special day.

For more information, check out our website at
www.createandlearn.ca.

Email us info@createandlearn.ca for availability.

Liquidation Centre

EXTREMELY LOW PRICES ON

T-shirts, sweatshirts, bags,
headwear & much much more!

SATURDAYS ONLY

10 - 3

9968 - 67 AVENUE

Parent & Tot Playgroup

We would like to apologize for the error published in the previous newspaper. It was entirely our fault and we are sincerely sorry to anyone who was inconvenienced by our error.

Our Parent and Tots program operates in the lounge area of the community centre on the Last Friday of each month from 10:00 AM – 12:00 Noon. This volunteer run program is for parents/caregivers and their young children (ages 0-5) to drop by and make friends with other families in Argyll; as well as have fun together.

This is a free program for community residents with no snacks & beverages. If you would like to help out contact: Erin Raudebaugh by e-mail at: <mack_329@yahoo.com>

Argyll YOGA

Watch for the new sessions to begin in January.

Mondays at Argyll Hall 7:30 – 9:00 PM. This is Hatha Yoga with a focus on alignment, core stability and awareness of body and breath. Our instructor is Renee Giammarioli who is a Yoga Association of Alberta certified yoga instructor and is also a physiotherapist. Session fee is \$100.00 for ten days. Drop in fee is \$15.00 per day. To inquire, call Renee at 780.431.1916 to learn more details.

Bonnie Doon Pool Fall / Winter

Members of Argyll Community League are eligible for family swimming in Bonnie Doon Pool at these designated days and time:

Saturdays from 6:00 – 7:00 PM
Sundays from 4:15 – 5:45 PM

You and your family will need to show an Argyll Community League membership card.

Argyll Pre-School Soccer

New sessions will begin in January. Tuesday at Argyll Hall 5:30 – 6:30 PM. The Triple Meg PreSchool Soccer program is designed for ages 3-5 years. The program is a high energy, fun, age-appropriate introduction to soccer skills involving fun games which encourage children to enjoy the sport. Children will be involved with a soccer ball at their feet giving them the most time with a soccer ball to learn or improve their soccer skill. Triple Meg's focus is soccer skill development, spatial awareness, coordination, balance and agility all through a fun and positive environment for activity.

Please visit www.triplemeg.com for schedules and registration.

Location — Argyll Community Hall
When — Tuesdays 4:30 – 5:30 PM

Cost — \$95.00 (per student)

Argyll residents can register online with the link provided and do not need to include payment information. Class size is limited to 12 participants.

Argyll CASINO

Need volunteers

Argyll Community League has been given two days for our Community Casino. Argyll relies on revenue from Casino fund-raising for a majority of its operating budget. These Casino opportunities are available to us every couple of years. They involve as many as 30 volunteers over the two-day Casino event. With only 340 residences in the Argyll neighbourhood we require a higher percentage of participation from our membership than do other larger communities. Each Casino event requires nearly 10% of the residents to volunteer. The dates are: March 07 and 08 in 2016. There is some paperwork required for volunteers to fill out and these need to be submitted by the end of January. We can train anyone and we can organize child care if there is enough need. The coordinator for our Casino events is Dallas Raudebaugh who can be reached at: 780.469.1517.



Argyll Executive

President:

Dave Trautman
780.463.9310

Secretary:

Linda Strong-Watson
780.466.4289

Treasurer:

Roxanne Higuchi
780.436.9616

Casino Coordinator:

Dallas Raudebaugh
780-469-1517

Director:

Karl Kovacs

Director:

Brian Stein

Director:

Hope Ungarian

Past-President:

Michael Leedham

Argyll Online

As always our web site has current information. Check-in weekly to see what's changed. Send us things you think the community would be interested in. The web site address is: www.argyllcl.ab.ca

If you wish to be added to the EVENTS e-mail distribution list get your name into argyll.social@gmail.com to be included.

McDougall United Church "In the Heart of the City"



"Come Home to Christmas"

Sunday Services 10:30 a.m.

Christmas Music at Noon Benefit Concerts
12 noon - 1 p.m.

• Wednesday, December 2

Artists: Kimberley and Sean McMann, Adam and Jessica Robertson

• Wednesday, December 9

Artist: Timothy J. Anderson

These are FREE noon time community concerts.

Donations welcome in support of E4C School Lunch Program.

Special Christmas Music Service

Sunday, December 20 – 10:30 a.m.

The Longest Night

Taize and Christmas Music by Candlelight
Sunday, December 20 – 7 p.m.

Christmas Eve by Candlelight

Thursday, December 24 – 7:30 p.m.

New Year's Eve Benefit Concert

Thursday, December 31 – 7:30 – 10:30 p.m.
A family night of folk music, refreshments, kids activities.

Admission: Donations to the Edmonton Food Bank

McDougall United Church

10025 – 101 Street & Macdonald Drive

Phone 780-428-1818

www.mcdougallunited.com

Now Recruiting Girls Softball Players for the 2016 Season
Come and play for us!

The Edmonton Warriors Athletic Association delivers highly competitive play, funding support for teams, reasonable player rates, off-season training camps, experienced, qualified coaches, travel opportunities, emphasis on team-building, and amazing memories to last a lifetime!

Contact: Grant Taylor 780-340-2259
Kevin Martin 780-995-0983
George Juhaz 780-707-3190



REGISTRATION NOW OPEN

FOR SKILLS DEVELOPMENT

CAMPS STARTING JANUARY 2016 AT

EDM-Warriors.com

Follow us on Twitter: @EdmWarriors

"There's Room at the Manger..."

Trinity Ev. Lutheran Church
10014 - 81 Avenue

We invite you for ...

Christmas Eve Worship

December 24th

4:00 pm Family Service in English

6:00 pm Candlelight Service in German

8:00 pm Candlelight Service in English

Christmas Day Worship

December 25th

9:30 am in German

11:00 am in English

Both Services with Holy Communion

Regular Service Every Sunday

9:30 am German Worship

11:00 am English Worship

TRINITY EV. LUTHERAN CHURCH

10014 - 81 Avenue

Phone: 780-433-1604

www.trinity-lutheran.ab.ca



DO YOU WANT TO PLAY GUITAR?



CALL TODAY TO SCHEDULE YOUR FREE INTRO

GUITAR LESSON!

780 637 0513

Contact us Today at

www.EdmontonGuitar.com




GET 25% OFF
YOUR FIRST MONTH OF LESSONS!

Call 780 637 0513 TODAY

Offer expires on January 31st - Must bring this coupon at the intro session.

Students 7 to 87 years old!



RE/MAX
Central
Independently Owned and Operated
Wayne Moen, B.A.
REALTOR
direct **780-504-6789**
office **780-488-4000**
10805 120 Street
Edmonton, AB T5H 3P9
Email: waynemoen@remax.net
www.waynemoen.com

Highlevel Diner

*Open at 7:30 a.m.
weekdays for breakfast.
Have your early
morning meeting and still
get to work on time!*

Voted Edmonton's Best Breakfast & Brunch

🍏 Weekend brunches
open at 8:30 a.m.

🍏 Vegetarian &
celiac friendly

🍏 Warm, homey
surroundings showcasing
local artists

🍏 Healthy, hearty food
using local ingredients

🍏 Great desserts

🍏 Turkey Tuesdays

🍏 Ukrainian Thursdays

10912-88 Avenue
Phone: 780-433-1317
www.highleveldiner.com

🍏 Prime Rib Sunday Dinner

🍏 City View

High Level Diner is Featured on "You Gotta Eat Here"

the
Gutter Doctor

GUTTER INSTALL / REPAIR / CLEAN
FASCIA & SOFFIT
DOWNSPOUTS & FLASHING
5 YEAR GUARANTEE ON INSTALLS

780-709-6825
info@gutterdoctor.ca

15,000
HAPPY
CUSTOMERS!



Thai **express**

Sherwood Park Mall
2020 Sherwood Dr
Sherwood Park

Mon to Fri: 9:30 a.m. to 9 p.m.
Sat: 9:30 a.m. to 6 p.m.
Sun: 12 p.m. - 5 p.m.
Phone: 587-269-1820

10% off
Regular priced items

With coupon. Does not include daily
specials. Expires Nov.30/15.
Sherwood Park Mall location only.

Garneau News

Development Permits In Garneau For October And November 2015

25 Nov 2015

Sign Development Permit
Reference ID: Job No 158170979-003
Description: To install (1) Fascia On-premises Sign - existing without permits (PHOBULOUS).
Location: 8701 - 109 STREET NW
Plan 8722052 Blk 186 Lot 13A
Applicant: 1278453 ALBERTA LTD O/A PHOBULOUS RESTAURANT
Status: New

20 Nov 2015

Sign Development Permit
Reference ID: Job No 182667676-001
Description: To install 2 Minor Digital On-Premises Signs (McDonald's).
Location: 8415 - 109 STREET NW
Plan N4000R Blk 178 Lots 16-20
Applicant: PRIORITY PERMITS
Status: More Information Required/Requested

20 Nov 2015

Minor Development Permit
Reference ID: Job No 161092241-011
Description: To develop a Secondary Suite in the basement of a Single Detached House. Location: 10947 - 90 AVENUE NW
Plan 1423020 Blk 150 Lot 48
Applicant: ROCKWALL CONTRACTING LTD
Status: New
Neighbourhood: GARNEAU

19 Nov 2015

Home Occupation Development Permit
Reference ID: Job No 182634292-001
Description: We are to run an e-commerce business. We will sell foods, household and skin care products. Inventories will be received and stored at our place and items will be collected by couriers when orders are received from our customers.
Location: 11031 - 81 AVENUE NW
Plan 6271ET Blk 153 Lot 4
Applicant: HAO, PINGCUN
Status: In Development Review

12 Nov 2015

Major Development Permit
Reference ID: Job No 180684726-002
Description: To change the Use from Household Repair Services to General Retail Stores (89.2 m2).
Location: 10814 - 82 AVENUE NW
Plan N4000R Blk 170 Lots 5-6
Applicant: KNIFEWEAR INC
Status: New

12 Nov 2015

Major Development Permit
Reference ID: Job No 182128114-001
Description: To construct a 3 Dwelling Apartment House and to demolish the existing Single Detached House.
Location: 11007 - 85 AVENUE NW
Plan I23A Blk 161 Lot 31
Applicant: NEW ERA LUXURY HOMES
Status: To Be Assigned

07 OCT 2015

Major Development Permit
Reference ID: Job No 180371600-001
Description: To construct exterior alterations (rear fire escape maintenance and screening) to an existing commercial building.
Location: 8536 - 109 STREET NW
Plan 8120872 Blk 146 Lot 30
Applicant: ETHOS ENGINEERING INC
Status: New



*The Garneau
Community League
Board of Directors
wishes you and your
family
a safe and happy
Holiday Season*

Sidewalk Snow Removal Pilot Project- at the November Garneau Community League meeting a representative of the City of Edmonton advised that they will be conducting a Residential Sidewalk Snow Removal Pilot Project in The Garneau Community this winter. We do not have any written documentation yet on the pilot project. The City reported that the Garneau Community has one of the highest number of complaints recorded on 311 regarding sidewalk snow removal. TGCL was told that there will be an increase in the number of enforcement officers in the community during the pilot project period. It is recognized that rental houses are one of the biggest offenders for not clearing the sidewalks. The City will send out information notices to the owners of rental houses about the pilot project and encourage them to clear the sidewalks in front of their houses. The purpose is to get people on board about clearing the snow – through encouragement, education, use of snow angels and other volunteers and to get folks to clear the front sidewalks willingly without enforcement/fines. Fines will be the last resort. The project will be reviewed in early January 2016. Rumor has it that approximately 10,000 people walk through The Garneau community on a daily basis. Once more information is received from the City of Edmonton I will send it out via our email list.

The Garneau Community League Memberships - Community League Memberships for 2015-16 – reminder for folks who have annual and multi-admission passes at City recreation centres – you get a 10% discount with a community league membership. Memberships are available by emailing me at kathybk@shaw.ca or calling 780-439-5264. The Garneau Community League Memberships at \$5.00 is the best bargain in town.

Casino – The Garneau Community League Casino was held on November 9 and 10, 2015 at the Baccarat Casino – thank you to all the volunteers from the Garneau Community League, the Casino Angels and the Delta Chi and Delta Kappa Epsilon Fraternities.

Garneau Community League Meeting – The next meeting of The Garneau Community League will be held at the City Arts Centre on January 13, 2016 at 7.30 pm

Garneau History – Good news – The Edmonton Historical Board has approved a plaque to be installed in front of the Garneau Lamp (located at 109 Street and 88 Ave just before the High Level Bridge). The installation will be in the spring of 2016 – Thank you to Frances Cruden for all her hard work.

Garneau Community League

10918 – 81 AVE EDMONTON AB
T6G 0S2 TEL: 439-5264

Karen Parker **President**
Paul Cachia **Past President**
Kathy Bruce-Kavanagh **Treasurer**
Kelly Butz **Secretary**
Mary Gordon/Alan Besecker **VP South Garneau**
Ian Burch **VP Middle Garneau**
Mark Dunlop/Kai Waselius **VP East Garneau**
Dr. Janet Palmer **VP North Garneau**

City Arts Centre and City of Edmonton News

- The 2016 Winter in the City Program Guide is now available at the City Arts Centre
- Imagination Playground Drop-In – Fridays (ages 2-5) 9.30 am – 11 am and Holiday Hours (ages – 2-9 – December 19 – 24 and December 29-31 from 10am - 2 pm for more information visit edmonton.ca/cityarts.
- Green Shack Program – free community drop-in recreation program located at McKernan 11341 – 78 Avenue (Gowan Park, east of community league rink) – Join in games, sports, crafts, nature activities, drama, cooking and more. Children ages 6 – 12 are welcome. Children 5 and under must be supervised by a parent or guardian at all times. Families are welcome to participate – December 8 – January 2, 2016 – Tuesday and Thursday – 4:00 – 7:00 pm and Saturdays 1:00-5:00 pm. This program will focus on Winter.
- The City of Edmonton has published a handy dandy booklet called Winter Excitement Guide for 2015/16 – it provides information for events and festivals in and around the City of Edmonton – you can pick up a copy at The City Arts Centre.

Hazeldean News

Hall Rental

9630-66 Avenue,

Hazeldean Community Hall offers reasonable hourly, weekend, wedding and special event rental rates! We offer a full kitchen, seating capacity of 250/220 with alcohol, free parking and wheelchair accessibility. Our newly renovated Community Room is also available for rental with a maximum capacity of 50. We also have a new large and attractive private patio area directly off of our community room which is perfect for outdoor events.

Hazeldean Board

President – Bill Elgert
Vice-President – Jason Said
Secretary – Marci Doroshuk
Treasurer – Tracy Vanberg
Civics – Vacant
Facilities – Mona Boss
Memberships – Toby-Anne Reimer
Publicity – Brandy Berdeniuk
Social – Carrie Madu
Soccer – Dee Karner
HCL Administrator – Dawn Banner
Director-at-Large (Soccer) – Jeff Cummings
Director-at-Large (Publicity) – Alana Cummings
Director-at-Large (Social) – Janel Kidd

Committee Chairs:

Greenway & Naturalization – Donna Gannon
Playground Committee – Blair Croft & Carrie Madu
Playgroup Coordinator – Jennifer Casino – Dawn Banner
Edmonton Safe Parents Association – Dawn Banner

Contact Us

Mail: 9630 – 66 Avenue,
Edmonton AB T6E 4W9
Phone/fax: 439-0847
(24-hour answering machine)
Web: www.hazeldean.org
E-mail: hazeldeanleague@shaw.ca

For more information about Hazeldean Community League visit our website: www.hazeldean.org or join us on Facebook.

Milk jugs needed

One of the designs for the lanterns requires either 4 litre or 1 litre plastic milk just – with the lid. If you can donate any of clean and empty milk jugs to our lantern night, then please contact Toby-Anne at 780-433-8585.

Craft Sale was a huge success

The Hazeldean Christmas Craft Sale was a wonderful weekend filled with smiles, conversations and of course gift buying. We raised over \$1000.00 to donate towards the J.H. Picard Playground and Outdoor Revitalization Committee. A huge thank you to the 12 volunteers, 26 vendors and over 600 'neighbours' who came from all over the city and beyond. Also a special thank you to the troop of young volunteers for helping in the kitchen and doing such a great clean up job. You are a great example to other children!

Edmonton 311 App

Report your concerns on the go! With the free Edmonton 311 app, you can use your smartphone to easily notify the city of:

- Potholes • Damaged sidewalks • Damaged trees
- Litter • Graffiti

Help keep Edmonton great! Be the eyes and ears on the streets!

By doing this, you're helping us to better assess, prioritize and determine the corrective action based on severity, location, and other factors.

Note: The 311 mobile app is one more way for you to report your concerns to the city. Download 311 App

Search for "Edmonton 311" on: Google Play & iTunes App Store

For more information:

Online Contact 311 Online

Season's Greetings and
Best Wishes for a Happy
New Year

**Linda
Duncan**

**Member of Parliament
Edmonton Strathcona**

10049 81 Avenue
(entrance on 101 Street)

780-495-8404
linda.duncan.c1@parl.gc.ca



SARA
K A L K E

REALTOR® **RE/MAX** RIVER CITY

DIRECT: (780) 710-7669

www.sarakalke.com



Selling Edmonton's Walkable Homes!

Ritchie News

Community League Contacts

Executive:

President: Laura Cunningham-Shpeley

Vice President: dallas Bartel

Secretary: Karen Slater

Treasurer: Simon Slater

Board:

Adult Programs: Tammy Hay

Casino: Berni Fuchs

Civics: Nigel Nethersole

Communications: Jo-Ann & Jeff Marvin,

Community Events Co-ordinator: dallas Bartel

Facilities: Ed Retzer/Leonard Wampler

Liveability Co-ordinator: Tracy Price

Membership: Monika Trott

Soccer: (vacant)

Sports: Leonard Wampler

Youth Programs: Julie Kochan

Volunteer Co-ordinator: (vacant)

Director-at-Large: Jeff Ollis

Director-at-Large: Allan Bolstad

Director-at-Large: Val Stark

Monthly Meetings

Meetings are held at 7 p.m. on the first Thursday of every month at Ritchie Hall. Everyone is welcome and encouraged to attend!

CONNECT WITH RITCHIE COMMUNITY LEAGUE

• Co-ordinates: 7727 98 Street NW | Edmonton, AB | T6E 5C9 | 780-433-7137

• By e-mail: ritchiewebsite@gmail.com

• Online: www.ritchieCL.com

• Facebook: facebook.com/WelcometoRitchie

• Twitter: @RitchieYeg

Hall Rental

Hall Co-ordinator: Keri Walmsley

Ritchie Community Hall is a great venue for family and community events, large or small. There are two rooms to rent: one for 150 people, complete with stage and bar. The second room is more suited to intimate gatherings of 60 or fewer guests. Both rooms have access to a kitchen with commercial-grade appliances, and the fabulous parkland and recreation facilities just outside their doors. The facility has ample parking and is wheelchair accessible. Best of all, rent is discounted for Ritchie community league members!

To book a room, fill out the online rental request form at www.ritchiecl.com. You can also phone the league office and leave a message at 780-433-7137.

Ritchie Christmas Party

Celebrate the season with friends and family at the Ritchie Christmas Party, on Thursday, December 17th, from 6 - 8pm. There will be cookie decorating, lanternmaking, and more! Please bring a snack to share. RSVP with the number of adults and children attending by emailing Julie at: juliekate.co@gmail.com or texting 780.982.5323.



Winter Fun Fest

The Winter Fun Fest is an opportunity for families in Southeast Edmonton to spend time together in community, celebrating winter through a variety of different winter activities. Some of these activities include sleigh rides, skating, snowshoeing, cross country skiing, ice sculpting, a teen hockey tournament and much more. And the best part is that it's absolutely free! It will be held on December 12th, at Ottewell Community League (5920 93a Ave NW, Edmonton). The Winter Fun Fest has something for all ages, and is an event that you won't want to miss! If you would like more information feel free to call or email Micah Hesman (780-496-2703, micah.hesman@edmonton.ca) and he will get back to you as soon as possible!

Clothing Donations Wanted!

The league and the Cerebral Palsy Association in Alberta are partners. You can help by filling the CPAA clothing bin with donations of quality and clean used clothing. No household items please. The bin is located in the league parking lot at 7727 98 St. Proceeds from the sale of the collected clothing will provide a small stipend to the league, but more importantly will support our neighbours with cerebral palsy. One bin: provides 1 person with a 3-month recreation activity subsidy, sends 20 children with disabilities to camp, funds adaptive equipment like bikes and skis for 6 families funds 250 hours of support to CPAA members.

Note this is in addition to the existing bin for the collection of newspapers for recycling. Newspapers only. There is no facility at the league for the collection of other recyclables. FYI The one garbage bin is for hall use only.

Ritchie 4 Corners Committee

Thank you to everyone who came out to the Open House on November 26. We had over a hundred residents attend and learn about the changes that will be coming to the Four Corners. A new web site featuring the Four Corners has been launched by Tooq inc. Check out the site to learn about your local Ritchie businesses: Ritchie Four Corners.

If you missed it, or would like further information about the Four Corners Program, please contact Braidon Reid from the City of Edmonton.

Ritchie Safety and Livability Committee



Do you have a neighbour who is a snow angel? Nominate them and they'll receive a Thank You card from the Ritchie Community League.

The first 10 nominations will receive a gift card to Mill Creek Cafe. Email your nominations with the address (and name and personal message if you wish) and we'll drop off a card to them. Contact us at ritchiesafety@gmail.com.

Three Ritchie families prepare for Syrian refugees

Three Ritchie families are working together with other volunteers from across Edmonton to sponsor a Syrian refugee family. Calling their group House of Welcome, the 11 Ritchie-ites are among 20+ volunteers who have been working toward this goal since October. They are guided in their efforts by Catholic Social Services and supported by St. Joseph's College on the University of Alberta campus.

"We don't all know each other and only some in the group have affiliations with St. Joseph's College or the Catholic church, but we all believe Syria's refugees, all refugees really, deserve a safe haven to rebuild their lives and we can provide that," says Keri Walmsley, who is also the hall coordinator for the Ritchie Community League.

The task is daunting. First the group needs to collect \$30,000, the estimated cost of supporting a family of four for one year. As of Nov. 22, \$20,000 had been raised. But the real work and reward begins when the newcomers arrive.

House of Welcome has organized itself into several committees. Some are tasked with finding the family accommodations and all the things necessary to set up a house. Another will look after getting everyone into schools or language training. Other volunteers will work with them to sort out their official documentation, while others will show them where to shop and where to connect with others of their faith and homeland.

"We'll show them how to ride the bus and help them with homework, get to appointments, find work. It will be an enormous culture shock coming to Canada after years in refugee camps in Lebanon, Jordan or Turkey, especially in winter, but we're determined to make them feel welcome," says Michelle Rochard, who along with her husband Matt Kostecky and three children, brought Keri's family of four on board, who then brought in neighbours Lisa Larson and Ted Cottingham.

The sponsorship commitment is for one year, after which the newcomers are expected to financially support themselves. The financial support is huge, but the practical and social support is even more valuable. That determines if they will feel "a part of" or "a part from" Canada, says Larson.

"House of Welcome volunteers are a diverse and passionate bunch, so I'm confident we'll live up to our name. And I trust that others in Ritchie and throughout Edmonton will work to welcome these newcomers too, each of us in our own way."

Other Committee News

Soccer Director

Ritchie is looking for a new soccer director. Love happy kids? This is a rewarding volunteer opportunity that is tons of fun. Daunted? Don't worry! You'll have a mentor to get you started. Email ritchiewebsite@gmail.com for more information.

Hey Ritchie! We're listening! Do you have an idea for a community league program? Are you concerned about crime? Traffic? Development? Want to get involved? We would love to hear from you. Committees are always looking for new members. Contact information for the league is on the previous page.

In the Ritchie Community

Edmonton Bicycle Commuters' Society (EBC): EBC will recognize all Ritchie Community League 2015-2016 membership cards as equal to EBC membership cards. Ritchie members can now access the following EBC services at discounted rates: Use of EBC shop tools, stands and volunteer support: \$2/hour. Workshop and course registration: now \$5 less than non-member fee! Check out the EBC web site: edmontonbikes.ca.

Edmonton Reptiles and Amphibian's Society: Meets on the third Tuesday every month at Ritchie Hall from 7:30 - 9 p.m. We meet next on Dec. 8, and then January 19. For more information, contact Tim.

Yoshinkan Karate for Families: Ritchie Community League Hall is home to a Karate school that provides lessons for adults, children (age 7+) and families. Everyone is encouraged to come and try TWO FREE classes at any time. Classes run from September to June on Tuesdays and Thursdays at 7:00 p.m. Last class of December is the 10th, then classes resume January 5. Classes are taught by certified Black Belt instructors and focus on fitness, self-defense and fun in a safe and social atmosphere providing our members with a place to develop their bodies, minds and spirits while learning traditional Karate. Please visit www.KarateInEdmonton.com, or call 780-913-1652 for more information. New students are always welcome. Also, see our website or ask about our discount for Ritchie Community League Members!

Rollie Miles District Park Master Plan Survey

We want to hear from you in our online survey! The Rollie Miles Athletic Field District Park faces the challenge of addressing community needs with infrastructure beyond its expected life cycle. In 2013 & 2014, the City of Edmonton began to collect information from the community and primary users to understand more about the recreational activities that were important in this park. The Master Plan is scheduled to be completed by the end of 2016 and phase two of public engagement has begun. An Open House was held on Nov 5th. Fill out this online survey to further develop the concept options and determine the future of the renewal of Rollie Miles Athletic Field District Park. Survey is open until Dec 6, 2015. Future updates (& survey) are available at: www.edmonton.ca/rolliemile-sathleticpark

Ritchie Hall Revitalization Committee

Just as the RHRC has been arranging an 'out with the old, in with the new' overhaul for Ritchie Hall, similar renovations were experienced in the Federal government in October. As a result, many of the grants the previous government established are 'up in the air' funding-wise. RHRC plans to continue scrutinizing Hall designs over the winter while keeping a close eye on the new and continuing funding sources that become available in early 2016. In the meantime, our focus will be on the skate shack! We're working to arrange a beautiful skate shack renovation to be installed ASAP that will make Ritchie proud (and toasty warm!). Stay tuned for the next phases of the Ritchie Hall Revitalization through 2016.

League Programs

Bingo: Last game Dec. 9. Resumes every second Wednesday evening from 6:30 - 9 p.m. starting January 6. All are welcome. For more information, email Joanne: j_niederhaus@hotmail.com.

Bridge Club: Play continues at Ritchie hall with up to 25 tables playing every Friday. Last game and banquet Dec. 18. Resumes weekly January 8. Doors open 11 a.m. Games start at noon. Newcomers are welcome. Contact Rose-Marie: 780-439-4884.

Cribbage Club: Doors open at 12:30 PM. Runs bi-weekly on Dec. 2, Dec. 16. Last game and Christmas Party on Dec. 16. Resumes every second Wednesday, starting January 13. All are welcome. For more information, email or call: Maryann hall4mary@telus.net (780) 462-8582 or Kate (780) 433-0977.

Home-school Playgroup: We meet every second Tuesday afternoon. Last meeting Dec. 8, resuming every second Tuesday, starting January 12. The playgroup is for schoolaged kids and their younger siblings. Activities include: Lego challenges, free play, drama performances for parents, active games, as well as arts and crafts with our other homeschooled buddies. Homeschoolers from neighbouring communities are also welcome! Email kar-endwhitehead@gmail.com for more information.

Fit for Life (Formerly Older Adult Fitness) Classes: Tuesdays and Fridays from 9 - 10 a.m. No classes Christmas and New Years days. Move to the oldies in this mixed-level class offering exercise for every body! The workout includes components of cardio, strength training, balance and flexibility for a well-rounded one-hour workout! For more information, email Lynn Lindsay: lynnlindsay828@gmail.com or call 780-996-2182.

Preschool Playgroup: The (free!) pre-school play group at Ritchie Hall meets every Tuesday morning, until December 15. We will meet up again starting Tuesday, January 12. Bring your children between the ages of 0-5 years to the Ritchie Community League to meet and hang out with other Ritchie parents, have your kids play together, and enjoy complimentary coffee and snacks as well! Please e-mail Monica Grove, the pre-school playgroup co-ordinator, at winkmonalisa@gmail.com, or find us on facebook.

Yoga: Yoga will resume again in the New Year on Wednesdays, starting on January 6th (7-8p.m.) So get those yoga pants ready with those New Year's resolutions! Yoga at Ritchie Hall will be just what you need to stay warm and fit in January. Classes are \$12, or \$10 for Ritchie Members.

Zumba at Ritchie Hall: Gift yourself an hour every Monday in December and work off the holiday stress with a party! Mondays 7 - 8 PM. No dance experience necessary, all levels of fitness welcome! Just come out and have some fun! Please bring indoor shoes and a water bottle. More questions? Email Margareta Jesse (zumbamj@outlook.com). Drop-ins are welcome. Fees apply.

COME SING WITH US!

- Award winning organization
- Professional conductors
- Travel locally, nationally, internationally
- Variety of musical styles

Junior Choirs - Ages 6-12
Boys' & Girls' Choirs - Ages 11-15
Youth Choir - Ages 15-24

Contact us for more information about our choir programs
info@EdmontonYouthChoir.ca | www.EYCC.ab.ca
780-994-6539

EDMONTON
Youth and Children's Choirs

SCHOOL of
**CONTINUING
EDUCATION**

CONTINUE EXPLORING AT ANY AGE

ARTS, DIGITAL MEDIA AND DESIGN
BUSINESS AND MANAGEMENT
CONSERVATORY OF MUSIC
ENGLISH AS AN ADDITIONAL LANGUAGE
HEALTH AND WELLNESS
MINERVA SENIOR STUDIES
UNIVERSITY PREPARATION

Free concerts, events, lectures

MacEwan.ca/ContinuingEducation



BONNIE DOON
BOWLING LANES

Presents the
**DEEP FREEZE
LEAGUE**

- 8 weeks of fun bowling
- Choice of either Mondays @ 7:00 p.m. **OR** Thursdays @ 7:00 p.m.
- 2 games each week
- 4 player teams. You can register as a single or we can make up teams here
- Cost is \$12.50 for Bowling, \$2.50 Shoe rental = \$15.00 per week **PLUS** \$10.00 registration fee
- Mondays start January 4, 2016 & Thursdays start January 7, 2016
- Prizes will be awarded at the end of 8 weeks

Tel: 780-466-9047
www.bonniedoombowling.com

All I want for Christmas is...

HOLIDAY GLAM \$140

Women's Haircut & Style
6 highlight foils
Eye brow shaping

UNDER THE MISTLETOE \$190

45 Minute Signature Massage
Signature Manicure
Signature Pedicure

MERRY & BRIGHT \$220

Aroma Steam Treatments
60 Minute Signature Massage
Signature Facial

MR & MRS. CLAUS \$250

2 - Aroma Steam Treatments
2 - 60 Minute Signature Massages

CHRISTMAS JOY \$430

Aroma Steam Treatments
60 Minute Hot Stone Massage
Luxury Pedicure
Luxury Manicure
Signature Facial
Elite Membership



Try our NEW



Brazilian
SLIMPLUS

Introducing Spasations Brazilian Slim Plus

Brazilian Slim Plus brings together three therapies for reducing one's body measurements and muscle strengthening. The sessions are 90 minutes each that can be performed 3 x week. The first session is a cavitational ultrasound therapy that explodes fat cells with powerful sound waves without prejudice to the surrounding structures. The second is the non-invasive electrolipolysis. The electromagnetic impulses are applied by electrodes that turn fat to metabolism routes. Muscle-building occurs in the 3rd session, causing contractions at specific points, strengthening and drawing the region treated. One should engage in aerobic activity for 45 minutes after each session to consume the fat released through the heart muscle.

ULTRASOUND CAVITACION & ELECTROESTIMULATION

Working with 40K strong sound waves the Brazilian Slim Plus carries explosions which effectively conquer the body's fat metabolism; repel orange peel fat, firms skin, enhances skin elasticity, etc. The effect is long lasting. This muscle stimulator device is used for applying electrical current via electrodes in direct contact with the patient.



Look at these amazing men & women before & after transformations.



Options
1 Trial Session
5 Sessions
10 Sessions

Brazilian
SLIMPLUS

SPASATION
SALON & SPA

8 Locations to serve you
www.spssation.com • 780-406-7272

