

NORTHEAST VOICE

Serving the community leagues of Evansdale, Kilkenny, and McLeod

February 2023



Published by Calder Publications. To advertise please call 780-434-9732 or email info@communityleagueneews.com



Winterscapes

CREATE A BEAUTIFUL WINTER YARD!

JANUARY 16 – FEBRUARY 27, 2023

Sculpt with snow, create playful winter scenes, build works of art, or maintain a natural winter yard.

Nominate a Winterscape – even your own! – for a chance to win!

Schools can enter too and will be eligible for a special prize!

Learn more at: edmonton.ca/winterscapes



Kilkenny Community Events

Family Day Pancake breakfast and Skate

Breakfast 10 am to 12 pm

Skate starting as 10am

Spring Soccer Registration with CGSA

Thursday Feb 23- 6:00pm to 7:30pm

Thursday Mar 02 -6:00pm to 7:30pm

Saturday Mar 04 -11am to 1 pm

Community Swims Dates

O'Leary Swimming Pool - Sat. 4pm to 6pm

Londonderry Swimming Pool - Sun. 4:15 to

5:45

Grant Trunk Swimming Pool- Fri. 7pm to 9pm

McLeod Indoor Soccer – Thank you!

The 2022/23 indoor season will conclude February 19 assuming we do not experience facility outages.

This has been an excit-

ing season watching players make new friends and develop their soccer skills. A big thank you to the coaches who volunteered their time to this

season.

We couldn't have done it without you.

Todd

McLeod Soccer Director

Evansdale Snow Removal

Do you live in Belle Rive, Eaux Claires or Evansdale and need assistance with your snow removal?

If you are a senior or are disabled, please contact Evansdale Community League. If anyone would like to clear sidewalks for our qualified residents, in partnership with the community league & City of Edmonton, please reach out. Compensation will be provided.

Email Jenilee at secretary@evansdale.ca or call 780-984-3298.



JOIN ME COUNCILLOR KAREN PRINCIPLE MARCH 2ND

COMMUNITY CONVERSATION

LET'S TALK ABOUT

- ✓ ZONING BYLAW RENEWAL
- ✓ DISTRICT PLANNING
- ✓ WHATEVER IS ON YOUR MIND



5 - 8 PM
KILLARNEY COMMUNITY HALL
8720 130A AVE NW

McLeod Community League News

At EPL Londonderry

Weekly:

Settlement Practitioner (Adult)

***Check in with the LON branch for ongoing schedule updates.

We offer Settlement Services to help you with common questions about moving to Canada and settling into a new home.

Sing Sign Laugh and Learn (Baby & Toddler)

Mondays 10:15 AM – 11:00 AM, 2:15 PM – 3:00 PM

Tuesdays 10:15 AM – 11:00 AM

Wednesdays 10:15 AM – 11:00 AM

Saturdays 2:30 PM – 3:15 PM

You and your child from birth to age three are invited to join us for songs, rhymes and signs.

STEAM Lab (Ages 9-12)

Tuesdays 4:00 PM – 5:00 PM

From robot battles to hovercrafts to building your own games, discover all things Science, Technology, Engineering, Art and Math.

LACE Conversation Circle (Adult)

Thursdays 10:00 AM – 12:00 PM

Drop in and join others who also want to practice their English.

Teen Lounge (Teen) – DISCONTINUED as of February

But there will still be activities for Teens on a drop-in basis!

Reading Buddies (Grades 2 – 4)

Thursdays 4:00 PM – 5:00 PM

Reading Buddies matches teen mentors with kids in Grades 2–4 to practice reading skills.

Practise English @ Your Library (Adult)

Thursdays 6:00 PM – 7:00 PM

Practise your English language skills, meet new friends, and have some fun. We'll have conversations about many different topics, using materials from the library.

Tech Time (All/Adult/Senior)

Fridays 3:00 PM – 4:00 PM

Need some one-on-one tech help? Bring your device (or use one of ours) and come prepared with a tech-related question or challenge you would like to explore with a savvy staff member.

Youth Talk (Teen)

Fridays 3:30 PM – 5:00 PM

Practice your communication skills and gain familiarity with Canadian society and culture in this conversation-based program designed for newcomer youth.

Monthly Events:

Book Clubs of EPL

The Last Kingdom by Bernard Cornwell.

Come and share your impressions, thoughts and interpretations of a book we have all read.

At EPL McConachie

Weekly:

Sing Sign Laugh and Learn (Baby & Toddler)

Mondays & Fridays 2:30 PM – 3:15 PM

You and your child from birth to age three are invited to join us for songs, rhymes and signs



Baby Laptime (Baby & Toddler)

Wednesdays 10:30 AM – 11:00 AM

Enjoy delightful stories, songs, books, rhymes, finger plays and more, especially for babies.

Please note that we will be open 1-5 pm on Monday Feb 20th

CGSA Outdoor Soccer 2023

AGE CATEGORY	BIRTH YEAR	COST	GAME DAY	EXTRA GAME DAY
U6	2017-2019	\$80	Monday	Some Sundays
U8	2015-2016	\$80	Tuesday	Some Sundays
U10	2013-2014	\$140	Sunday	Some Fridays/Saturdays
U12	2011-2012	\$140	Wednesday	Some Sundays
U14	2009-2010	\$140	Thursday	Some Sundays
U16	2006-2008	\$140	Monday	Some Sundays

***U10 AND UP ARE ENTITLED TO ONE WEEKLY PRACTICE DETERMINED BY THE COACH

Registration is open **NOW!**

Sign up at www.CGSA.ca!



Check out jumpstart.canadiantire.ca and kidsportcanada.ca for funding for low income families because cost should not be a barrier.



Entry By Donation

16th Annual Family Day Festival

UNDER THE SEA

February 20 / 12:00-4:00 pm

DOOR PRIZES

FOOD

CRAFTS

MUSIC

featuring Paul Woida

SLEIGH RIDES

GAMES

Bring your sleds and skates for outdoor fun compliments of the McLeod Community League!

Steele Heights Baptist Church
5812-149 Ave
shbc.ca
780.478.1553

Bake Sale Fundraiser for The Edmonton Food Bank

McLeod Outdoor Soccer Registration

McLeod will be holding registration sessions as follows at McLeod community hall.

February 21 - 6:00 - 8:30pm
February 26 - 1:00 – 3:30pm
March 4 - 1:00 – 3:30pm

Please see the McLeod and CGSA websites for additional information.

If you miss our last registration date, you can still register by emailing info@cgsa.ca or soccer@mcleodcom-

Birth Year	Fee	Game Day	Extra/Alternated Day
2017 – 2019	\$80	Monday	Some Sundays
2015 – 2016	\$80	Tuesday	Some Sundays
2013 – 2014	\$140	Sunday	Some Fridays/Saturdays
2011 – 2012	\$140	Wednesday	Some Sundays
2009 – 2010	\$140	Thursday	Some Sundays

munityleague.ca.

We will most likely be short coaches so please consider coaching. Coaching younger age groups is about making new friends, having fun and snacks. Feel free to contact

me at soccer@mcleodcommunityleague.ca or contact CGSA at info@cgsa.ca if you have any questions or concerns.

Todd
McLeod Soccer Director

Benefits of CSGA Soccer

Parents often ask “Why sign up for CGSA soccer?”

The most obvious benefit of CGSA soccer is exercise. The season tentatively runs from May 1st to June 30th. The CGSA community program focuses on friends playing with friends and having fun. When registering for the McLeod soccer program, players can request to play with a certain friend or coach. We try to honour requests as best as possible. However, there are occasions when friend or coach requests cannot be filled, as every team has a team player limit. Players can expect fair field time.

CGA community soccer is very affordable.

In addition to registration fees, players are responsible for their own footwear, shin pads, socks, and shorts. McLeod will provide jerseys that will be returned upon season end with the exception for U6 – U8 players who keep their jerseys. Parents will be required to purchase a community membership and sign up for one community service per child to a maximum of two per family.

We hope to see you at one of our upcoming payment sessions. For more information, please see the McLeod website at www.mcleodcommunityleague.ca or contact soccer@mcleodcommunityleague.ca.

McLeod Community Safety Director

Traffic Safety

Did you know?

You cannot have your dog on your lap while operating a motor vehicle. Under the Alberta Use of Highway Rules of the Road regulation you can be ticketed for \$162.00 as the dog can affect your ability to drive safely.

View not to be obstructed. Under Alberta Use of Highway Rules of The Road Regulation Section 80 A states a person shall not drive a vehicle on a highway if (a) the view through the windshield or windows of the vehicle is so obscured by mud, frost, steam or any other thing so as to make the driving of the vehicle hazardous or dangerous, or (b) an ornament, device or thing is placed in or on the vehicle so that it may obstruct that person’s view. Please ensure your windows are cleared from frost and snow before driving. Fine for this Violation is \$162.00.

Tint on front door windows and tinting off or adding tinted brows to windshields is illegal. Fines can range from \$81.00 to \$162.00 and an order may be given to remove. Failure to comply with the order will result in another fine of \$243.00. Please remove your tint. Glass shops will remove for a fee.

Windshields that are fully tinted will be ticketed and your vehicle can be towed. Your license plate will be removed and you won’t be able to drive your vehicle until a new windshield has been installed.

Why is tint illegal you might ask. Pedestrians have a hard time telling if the driver has seen them before crossing the road. In a collision the tint can hold safety glass which is meant to break into small pieces together creating a hazard by keeping the glass in large pieces and making it harder for first responders to break if they need to get you out of the vehicle. During poor lighting conditions or

whether it makes it difficult to be able to see out the vehicle and the mirrors. If the vehicle is involved in criminal activity it makes it difficult for the person reporting the details of how many people are involved in regards to the vehicle.

It is not illegal to have a hitch-ball on a receiver sticking out. Watch your knees folks when walking around vehicles. However it is illegal to have a hitch-ball on the bumper or on the receiver if it is blocking the licence plate in anyway while not pulling a trailer. Fine for this Violation is \$162.00.

Auxiliary Light bars cannot be mounted above the centre height of the headlamps. Does not matter if the light bars are covered or not. Fine for this violation is \$162.00. If Auxiliary light bars are turned on while driving down the highway you may be fined for additional offence of having them on.

Edmonton Police Service did a great campaign few years ago titled Put Your Skunk in the Trunk. This was in reference to Cannabis purchases being out of the reach of occupants in a vehicle and put in the trunk. This also goes for alcohol. Alcohol also cannot be in reach of any occupant in the vehicle. The trunk is the safest place to put your purchases.

Frostbite

When the temperature goes below freezing, it’s very important to protect your skin from cold-weather health risks. Frostbite occurs when the skin and in some cases the tissue beneath the skin freezes due to lengthy exposure to cold temperatures. Frostbite can result in severe and permanent damage.

Wear loose, light, comfortable layers. This helps trap warm air. The first layer should be made of a synthetic material, which wicks moisture away from your body. The next layer should be insulating. Wool and fleece are

great insulators and hold in more body heat than cotton. The top layer should be wind-proof and waterproof. A down parka and ski pants will assist you in keeping dry and warm.

Protect your feet and toes. To protect your feet and toes, wear two pairs of socks. The first pair should be made of moisture wicking fabric. Place a pair of wool or wool-blend socks over top of those. Your boots should be waterproof and be higher than your ankles.

Cover your head. To protect your head and ear, wear a heavy wool or fleece hat. On days were there is a wind factor wear a scarf or balaclava to protect your face. These will warm the air you breathe and helps prevent frostbite on your nose and face.

Protect your hands. Wear insulated mitts or gloves to protect your hands from the cold.

Avoid getting snow in your boots or clothing. Wet clothing increases the risk of getting frostbite. If you start to sweat, unzip your jacket a bit.

Stay hydrated. Ensure you are drinking enough fluids. Drink some water before heading outside and if your being active while outside ensure you replenish your fluids. Avoid alcohol.

Recognize the signs or symptoms. It’s important to detect frostbite right away. The first signs of frostbite include redness and a stinging, burning, throbbing or prickling sensation followed by numbness. If this occurs, go inside where there is heat immediately.

If you experience symptoms of frostbite, gradually bring feeling back into the body. Never rub frostbitten skin or put your hands or feet into hot water; use warm water or a warm washcloth instead. If you do not feel sensation returning to your body, or if the skin begins to turn gray, go to the hospital.

Property Assessment Mail Out

More than 400,000 assessment notices have been mailed to Edmonton property owners.

The assessed value of your property represents its market value as of **July 1, 2022** and is used to determine your share of provincial education and municipal property taxes. Provincial education taxes are collected by the City of Edmonton on behalf of the Government of Alberta to fund public education, while municipal taxes are used to fund City programs and services such as transit, road maintenance, fire rescue services, recreation centres, libraries and more.

When you receive your property assessment notice:

- + **Review** the details on your assessment notice. Accurate information ensures you only pay your fair share of property taxes – no more, no less.
- + **Check** what makes up your property’s assessment value and **compare** it with similar properties in your neighbourhood using the tools on edmonton.ca/assessment.
- + **Contact** the City, if you have any questions. Call 311 for one-on-one support. Our staff can answer most assessment-related questions with no formal complaint fees required.

More online tools are available at myproperty.edmonton.ca, including the assessment and tax history of your property and the ability to sign up for electronic notices. Use the individual code on your paper notice to register for your MyProperty account.

For more information, call 311 or visit edmonton.ca/assessment.



Traction

When was the last time you turned your shoes or boots over to exam the tread. Just like tires on a car, your footwear needs to have adequate traction on snow and ice. If the tread is low on your footwear it is time to get new ones.

Tobogganing and Sledding

Parents/Guardians please teach your children to walk up the sides of the hill and not up the center of the runs once they are done at the bottom of the hill. This will assist in injuries caused by collisions and will keep everyone moving instead of having to wait till your child gets out of the way.

It is recommended to have your child wear a ski or hockey helmet. Avoid your children wearing scarfs or clothing with draw strings to avoid risk of strangulation.

Children need to avoid going down the hill head first or laying flat on their backs. These two positions increase risk of spinal injuries. Sitting up or kneeling are the safest positions.

Commercial Vehicle Safety

Did you know?

Tie Downs and chains that are required by law for your cargo securement must have a readable working load limit on the straps and the chains must have a tag or be stamped

Any dunnage, shovels, brooms or other cargo cannot be secured by dunnage straps. Loose rocks, dirt, snow or ice must be removed from your truck, trailer or equipment you are hauling. Fine for this Violation is \$810.00.

Any links of your safety chains that are worn 20 percent will place your trailer out of service

Break-away Cable must be secured to the tow vehicle. I have seen many that are attached to the safety chains from the trailer

One Violation on log books that I see frequently is the driver signing the daily log before finishing his shift. Do



not sign until end of shift.

Crime Prevention

Do not leave anything in view in your vehicle that has any value. This includes loose change, purses, wallets, tools, garage door openers, sunglasses, cd's.

Lock your tailgate or box covers if lockable

Check and ensure your locks on your vehicles and home are locked every night before going to bed

Do not leave bags of bottles visible in your yards

Buy a doorbell camera. There are options available including getting a security system that has monitoring or if you don't want to pay for that option you can purchase one with an app where you do the monitoring yourself. Any video footage that can assist police in identifying the suspects involved in criminal activity can be beneficial.

If your expecting an amazon package and your not going to be home for an extended period of time ask a friend or neighbour to hold onto it till you arrive back home

If you spot an impaired driver call 911 immediately. If safe and possible follow the vehicle at a safe distance until police dispatch advises you otherwise. You will not get a Violation Ticket for being on your cell phone for calling this in. Signs of an impaired driver include driving slow or the speed goes up and down constantly, swerving back and fourth in the their lane, changes lanes frequently, passing without sufficient clearance, overshooting or stopping far back from stop

signs, not having lights or using signal lights, hitting curbs or going in and out of ditches.

And finally document and report any suspicious activity in our community. If its a suspicious vehicle make sure and document license plate, make and model, any distinguishable features that stand out (body damage, stickers, aftermarket accessories such as rims, spoilers, exhaust tips, tint, headache racks), color and last direction of travel.

If it's a suspicious person document approx. height, weight, age, clothing, headgear, sunglasses, shoe color, race and last direction of travel.

And just as important once you have documented or observed the suspicious activity is to call police right away. Extended time delays can reduce the chance of police being able to locate the person or vehicle. Call 780-423-4567 and follow options and if its a crime happening right now such as break and enter, theft from person or vehicle or any other serious crime call 911.

Changes to the Traffic Safety Act in regards to Slow-ing down for Emergency Re-sponders, Tow Trucks and now Snow Plows and Road-side Workers

The Traffic Safety Amend-ment Act, 2022 (formerly Bill 5) strengthens safety mea-sures to better protect all first responders and roadside workers on Alberta's high-ways.

The act requires motorists to slow down, when passing all roadside workers, when

vehicle lights are flashing and they are stopped on the high-way.

This change gives snow-plow operators and roadside maintenance teams the same legislated protection as first responders, tow truck opera-tors and construction crews. Having consistent traffic rules for all roadside workers also reduces confusion for motor-ists and increases highway safety. There were 128 col-lisions with highway snow-plows between March 2018 and March 2021. Alberta Mo-tor Association also reported 25 near misses and 3 serious collisions with their service vehicles between January 2018 and July 2019.

The act follows recommen-dations heard from the pub-lic and stakeholders during the roadside worker safety engagement held in spring 2021.

Key changes

The Traffic Safety Amend-ment Act, 2022 amends the Traffic Safety Act to:

passing passing protec-tions for roadside workers to include snowplow operators and roadside maintenance teams

clarify that when a vehicle is stopped with its flashing lights operating, motorists are required to:

- slow down to 60 km/h or the posted speed limit, which-ever is lower, in all lanes trav-eling in the same direction on multi-lane highways; and
- slow down to 60 km/h or the posted speed limit, which-ever is lower, when traveling in either direction on single lane highways.

Traffic laws in most other provinces require all drivers passing work vehicles on the same side of the highway to slow down. Four other prov-inces, including Manitoba, Saskatchewan, and B.C., re-quire all drivers to slow down on undivided highways.

Please slow down and help ensure everyone goes home safe!!

Kilkenny Hall Rentals



Times	Auditorium	Meeting Room	Both
Weekdays / Weeknights	\$200	\$100	N/A
Fridays (after 5 pm)	\$400	\$100	\$500
Saturdays	\$550	\$100	\$650
Sundays	\$400	\$100	\$500
Two Day Wedding & Gift Open-ing (Sat – Sun)	\$750	\$100	\$850
Full Weekend (Fri @ 5pm – Sun @ 6pm)	N/A	N/A	\$1000
Hourly Rate (4 hour min.)	\$100	\$50	N/A

The Kilkenny Hall is avail-able for rental!! It is the per-fect space for your special event, meetings, weddings and any other social event.

Please go to <http://www.kilkenny.ab.ca/facilities/> view to have a look and click on “Book Facility” to...you guessed it... book the facility!

The website will also show you when the hall is available. Feel free to call 780-478-2481 to leave a message for book-ings as well.

Discounts available for those who hold a consecutive membership for a minimum two years with Kilkenny Com-munity League.

We would like you to help Kilkenny

Looking to become a big-ger part of our community? Needing to fulfill volunteer requirements? Have a pas-sion you would like to share? Kilkenny Community League is looking for amazing com-munity members join our team!

We currently have a vacan-cy for our Baseball/Softball Director. The position would come with training from our outgoing director. Questions, always feel free to ask any of our amazing team!

Are you that “techy” per-son? We aren’t! Our website is looking for some TLC. If you love mixing tech with a touch of design, have we got

a position for you! We would need some items updated pe-riodically, which are provided by our various directors.

Not looking for a specific position? Have some ideas you think we would love to hear? We also have Direc-tors-at-Large positions open. This position gives you a chance to join the board, and see if you can find your place within it!

Our board meets the 2nd Tuesday of the month. If you’re interested, but not sure, let us know and we can give you more detail. You can even come to a meeting to see if it is a good fit for you! We hope to see you soon!

Evansdale Community League News

Serving: Evansdale — Belle Rive — Eaux Claires



Evansdale Community League AGM Announcement

You are invited to attend the Evansdale Community League Annual General Meeting on Thursday, February 23, 2023, at 7:30pm at the Community League Hall (9111 150 Ave).

The AGM is your opportunity to learn about the community, elect or join the next board of directors, and get your free membership!

At the AGM, there will be positions up for election. If you would like to nominate someone or are considering putting your name forward, please feel free to contact any

of the current board members to obtain more information.

As an incentive, we are offering free memberships to anyone who attends the meeting and lives within our Belle Rive - Eaux Claires - Evansdale boundaries.

Join together with your neighbours that really care about our community, and consider joining our board. A community league can be whatever we think our community needs. Bring your passion for our community, bring your ideas and hang out with some great folks.

2023 City of Edmonton Winterscapes Competition for Community Leagues

Winterscapes is a winter-themed contest by the City of Edmonton that encourages people to celebrate winter outdoors and to beautify neighbourhoods by creating

a front yard "winterscape". For complete details including rules, guidelines and how to enter please refer to the following poster.



WEISS-JOHNSON
HEATING, AIR CONDITIONING & PLUMBING SERVICES

WEISS-JOHNSON.COM
780-463-3096

OUR FAMILY HELPING YOUR FAMILY SINCE 1977.
OVER 45 YEARS IN BUSINESS!



GET AN AIR CONDITIONER OR FURNACE FROM DAIKIN!

NO PAYMENTS, NO INTEREST FOR 1 FULL YEAR!

INDUSTRY LEADING
12 YEAR PARTS LIMITED WARRANTY

City forecasts an improved snow and ice experience for this winter

The winter forecast calls for an improved experience when it comes to Edmonton's Snow and Ice Control, helping ensure safe mobility no matter how Edmontonians choose to travel across the city. Edmontonians will also have the opportunity to sign up for a new parking ban notifica-

tion tool that now includes text notifications and advanced notification of clearing in specific areas.

"This year, we want to ensure that everyone who lives, works and plays in Edmonton has an improved winter experience," said Craig McKeown, Branch

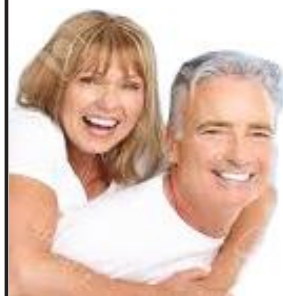
Manager, Parks and Roads Service. "Additional funding provided by Council will help enable the City's operations to be more effective in responding to winter weather conditions, providing more consistency in what Edmontonians can expect."

"Edmontonians will see an

improved experience in road and pathway clearing when the snow starts to fall in 2022," said Valerie Dacyk. "More crews will be seen clearing roads, pathways and City walkways. Edmonton is a winter city and we know that every day, people travel across our city in a variety of ways."

Denture Specialist - Over 35 Years Experience

Londonderry Denture Clinic



FREE CONSULTATION

M. Lucyshyn DD

R. Lucyshyn DD

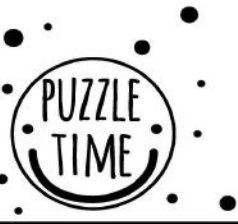
780-476-2529

- New dentures in one day
- Repairs in 30 minutes
- Emergency after hours appointments

SENIORS
Ask how you
may receive your
dentures
**AT NO COST
TO YOU***

*Some conditions and restrictions apply.

www.londonderrydentureclinic.com 13594 Fort Rd. Northeast Edmonton



COLOR BY NUMBER



light blue



dark blue



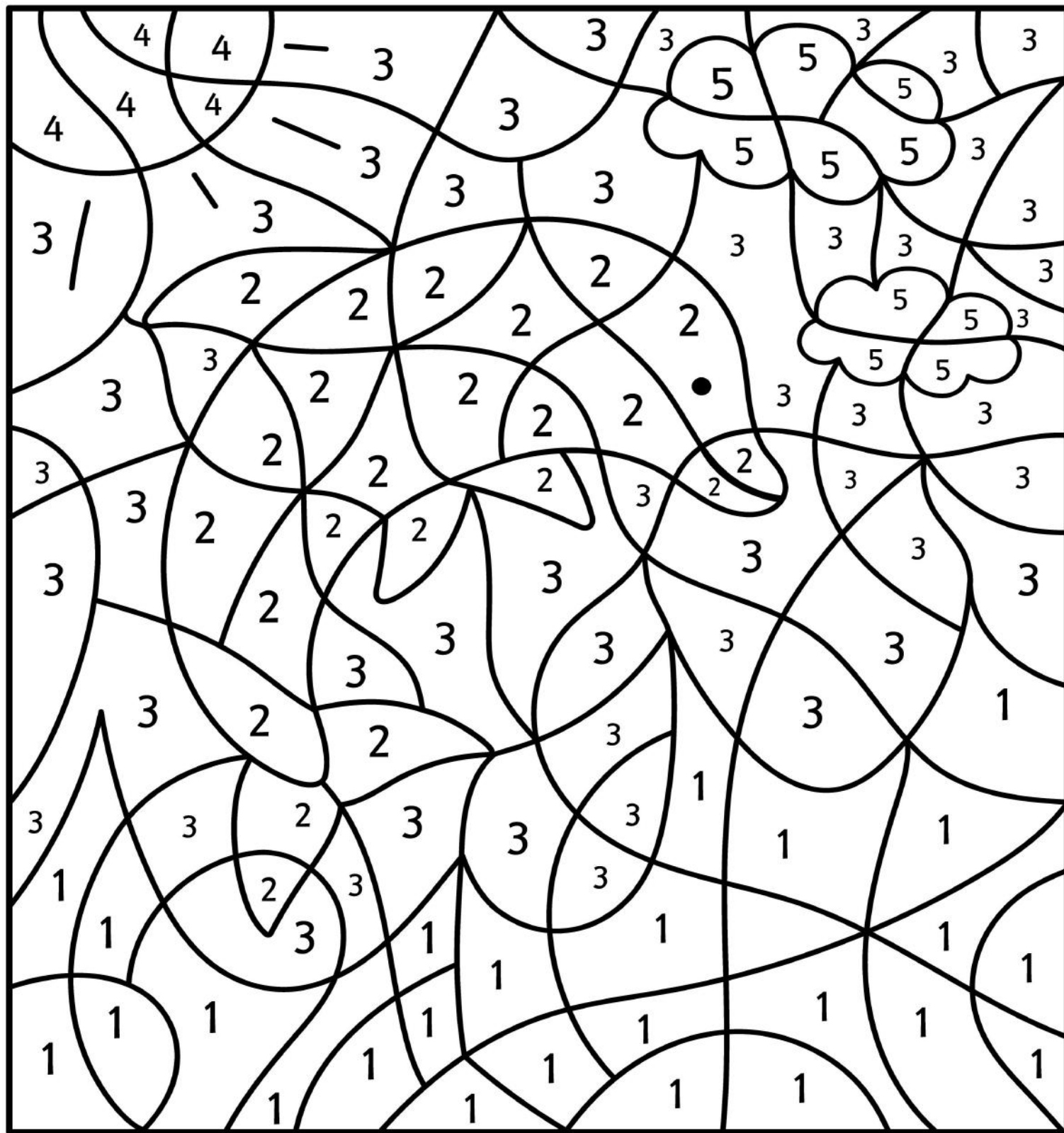
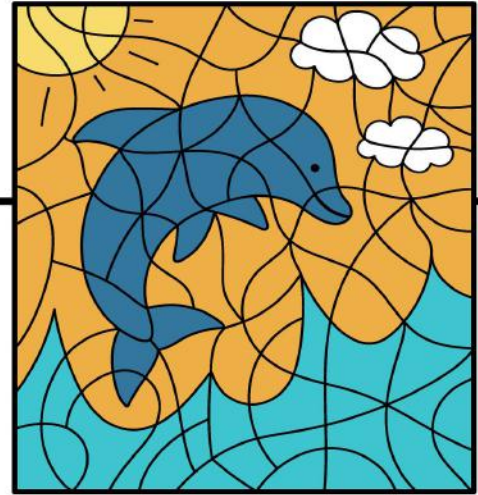
orange



yellow



white



2022/23
Improvements

Edmontonians can expect to see the following improvements in snow and ice operations, this year:

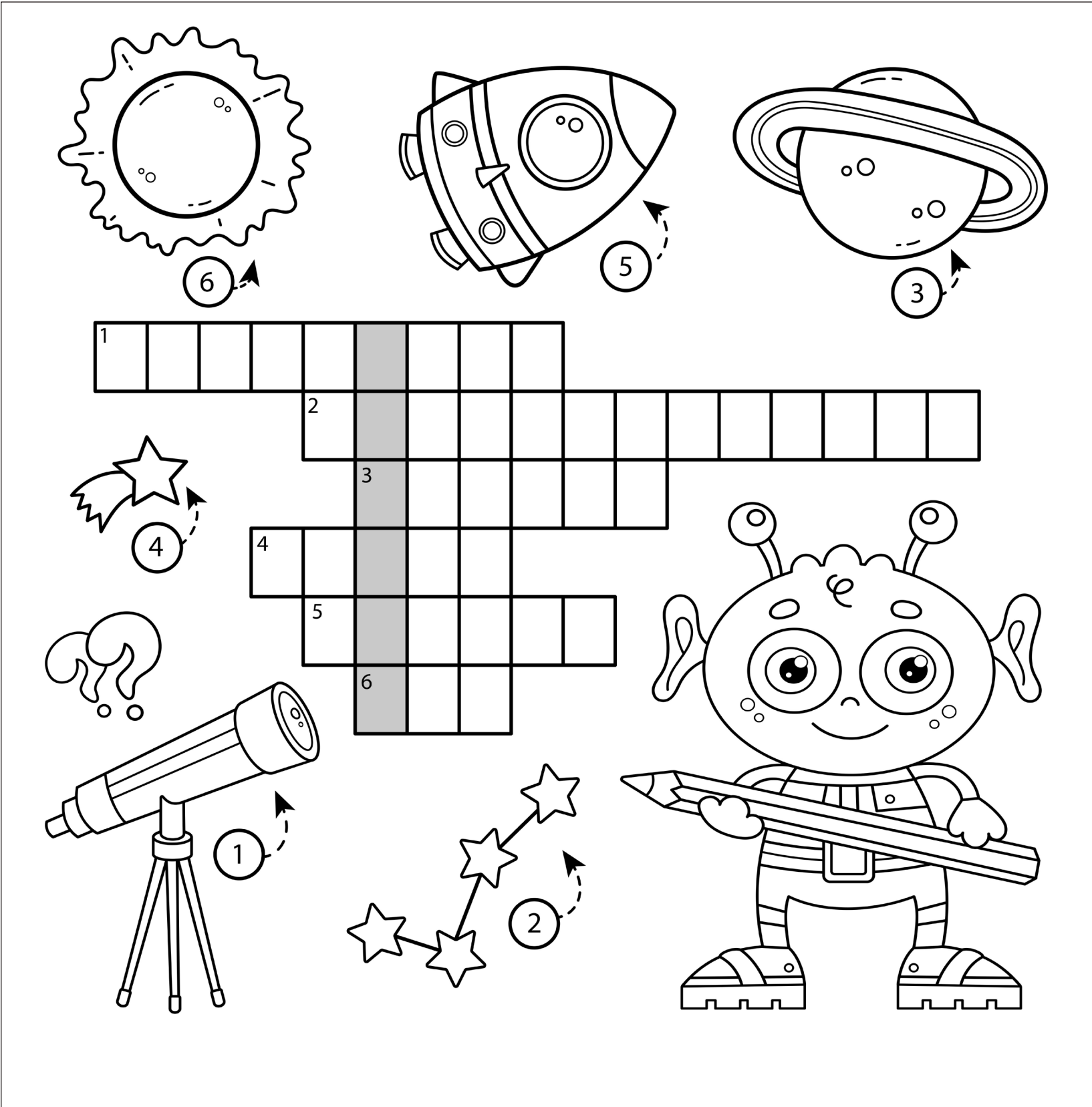
Improved experience - Earlier this year, City Council provided additional funding for Snow and Ice Control that will help enable operations to be more effective in responding to winter weather conditions, which will provide more consistency in service. More equipment on the road and larger areas covered more quickly. Additional pick up of collected snow around school zones. More frequent residential maintenance which includes the grooming of snow-pack. The addition of three supplier-filled large sandbox sites for public access. This season, the City will not be doing bare pavement plowing in residential areas, which will reduce windrows and catch basin issues in spring.

As part of the in-season enhancements for this year, Edmontonians can expect to see ticketing and towing as a tool to contribute to the speed, efficiency and quality of snow and ice clearing throughout the city. It should be noted that the current bylaw ticket is \$100, however, amendments to the traffic bylaw are on the agenda to be discussed at an upcoming Council meeting, which may result in an increase of this fine up to \$250.

“Snow removal is a shared responsibility and when vehicles are parked in areas that crews come to clear, it means a reduction in the effectiveness of the snow removal,” said Dacyk.

Name a
Plow Contest

This year, we are excited to invite all Edmontonians to participate in the Name a Plow contest! Everyone is invited to submit their creative ideas by visiting edmonton.ca/SafeTravels. Five plows will be named and have those names displayed. Information: edmonton.ca/safetravels



answer 1. telescope 2. constellation 3. Saturn 4. comet 5. rocket 6. Sun

Improved Parking Ban Notification Tool

Edmontonians are invited to sign up for a new parking ban notification tool that allows them to get improved notifications about snow clearing in areas that affect them during a parking ban.

Residents will be able to choose to receive a text and/or email notification, and receive that notification up to 24 hours in advance of crews clearing their area. Once the

crews have completed the area, a second notification will be sent to the resident letting them know. This new tool helps increase the convenience of moving vehicles off the streets and the efficiency of snow clearing.

People receiving notifications in previous years will have to create a new account and indicate their preferences for communication.

Residents can sign up by visiting edmonton.ca/SafeTravels. Priority Clearing and Parking Ban.

When it snows, there's a priority clearing system designed to keep Edmontonians safe and traffic flowing smoothly.

Roadways and Active Pathways have their own teams and specialized equipment to complete clearing.

That way, the service that they deliver does not compete with each other.

The City has the option to call a two-phased parking ban, allowing for improved service when conditions require it. The citywide parking ban consists of the following:

Phase 1 - Major Roads: Crews clear arterial and collector roads, bus routes and business improvement areas.

You may continue to park on your residential street. Phase 2 - Residential and Industrial Roads: Crews clear residential and industrial roads.

You may park in your driveway, in a parking space on a neighbour's property with their permission, or on any road cleared during Phase 1 where parking is allowed normally.

Know Your Rights

An individual's guide when interacting with police

More information is available at
edmontonpolice.ca/KnowYourRights

EDMONTON
POLICE
SERVICE



Or scan
the QR
code
to learn
more

We're here for you & your family.

Family Supports is a voluntary, early intervention program that provides support to families with children 7-18 years old to strengthen family functioning. Parents are supported to create a nurturing and safe family environment, build resiliency within themselves and their children, build new social connections, and learn about positive parenting and child development.

How can a worker help you and your family?

The Family Support program offers in-home support for families. All services offered as part of the Family Connect are completely free, including:

- Supportive counselling and goal setting
- Consultation and support to improve parent-child interactions
- In-home support
- Parent education
- Family interactive programming and activities
- Personal and family advocacy
- Information and referrals to additional resources

Family Supports by YMCA Family Connect

Castle Downs Family YMCA
11510 153 Avenue, Edmonton, AB T5X 6A3

780-377-3730

infohub@ymcanab.ca

ymcanab.ca/familyconnect



THE
TODAY
CENTRE

Family violence help starts today

Experiencing family violence
and don't know where to turn?

We can help.

Find the road to healing at
The Today Centre.

www.thetodaycentre.ca

(780) 455-6880

Has your property assessment changed? - Councillor Karen Príncipe

On January 16th the City mailed your property assessment notice. Property assessors used Edmonton's real estate market conditions as of July 1 2022 to determine the amount your home would have sold for in the open market. Please take time to review your property's new assessed value and get in touch with the property assessment experts if you have any questions.

Your property tax notice will follow your assessment notice later in May. The City uses the assessed value of your property to calculate the amount of provincial education and municipal property taxes you pay in proportion to the value of your home.

This year, Council approved a 4.96% tax increase and how this tax increase impacts you will depend on how your property assessment changed compared to the overall residential market. The assessment change for residential properties in 2023 is 3.6%. If your property value increased by a similar amount of 3.6% then you should expect to pay

4.96% in municipal taxes. If your assessment increased by MORE than the 3.6% assessment value, you may see a larger tax increase. If your assessment increased by LESS than 3.6% or actually decreased this year, you will either see a smaller tax increase or possibly even a tax decrease.

To learn more about your specific property's assessment history, you can log in to myproperty.edmonton.ca using the account number and access code on your assessment notice.

You can also use the City's calculator at taxestimator.edmonton.ca to learn what your tax bill could look like.

I know how important giving to the community is versus taking from it. I will continue to work on your behalf and to get as much value as possible for our hardworking taxes.

If you have any questions related to this article or any other issue, please reach out to me at my office, 780-496-8128, or Karen.Principe@Edmonton.ca

Sponsored By Karen Príncipe